

# User's Guide

Kentico CMS 7.0

## Table of Contents

<b>Introduction .....</b>	<b>4</b>
Kentico CMS overview .....	4
Signing in .....	4
User interface overview .....	6
<b>Managing my profile .....</b>	<b>8</b>
Changing my e-mail and preferred language .....	8
Changing my password .....	9
<b>Getting started .....</b>	<b>10</b>
Creating a new web page .....	10
Editing page content .....	12
<b>Using the editor .....</b>	<b>15</b>
Using What You See Is What You Get editor .....	15
Text formatting .....	15
Inserting images .....	16
Creating links .....	18
Inserting tables .....	20
<b>Editing structured documents .....</b>	<b>21</b>
Creating a news item .....	21
Editing a news item .....	23
<b>Deleting, moving and sorting documents .....</b>	<b>25</b>
Deleting and restoring a document .....	25
Changing document order .....	27
Moving documents to another section .....	27
Copying a document .....	28
<b>Translating documents .....</b>	<b>30</b>
<b>Workflow and versioning .....</b>	<b>32</b>
Publishing a document .....	32
Archiving a document .....	33
Versioning and rollback .....	34
<b>Security .....</b>	<b>37</b>

---

Granting permission to edit a document.....	37
<b>Newsletters .....</b>	<b>40</b>
Creating a newsletter issue.....	40
<b>Forms .....</b>	<b>42</b>
Creating and publishing a new on-line form.....	42
<b>E-commerce.....</b>	<b>47</b>
Creating a new product.....	47
Changing order status .....	50
<b>File import.....</b>	<b>56</b>
Bulk import of files .....	56
<b>Polls .....</b>	<b>59</b>
Creating and publishing a new poll.....	59
<b>Forums .....</b>	<b>62</b>
Creating a new forum .....	62
Moderating forum posts .....	66

**Note:**

In Kentico CMS user's guide, we demonstrate the capabilities of Kentico CMS on the example of the sample Corporate Site. Your particular website application may vary.

## Introduction

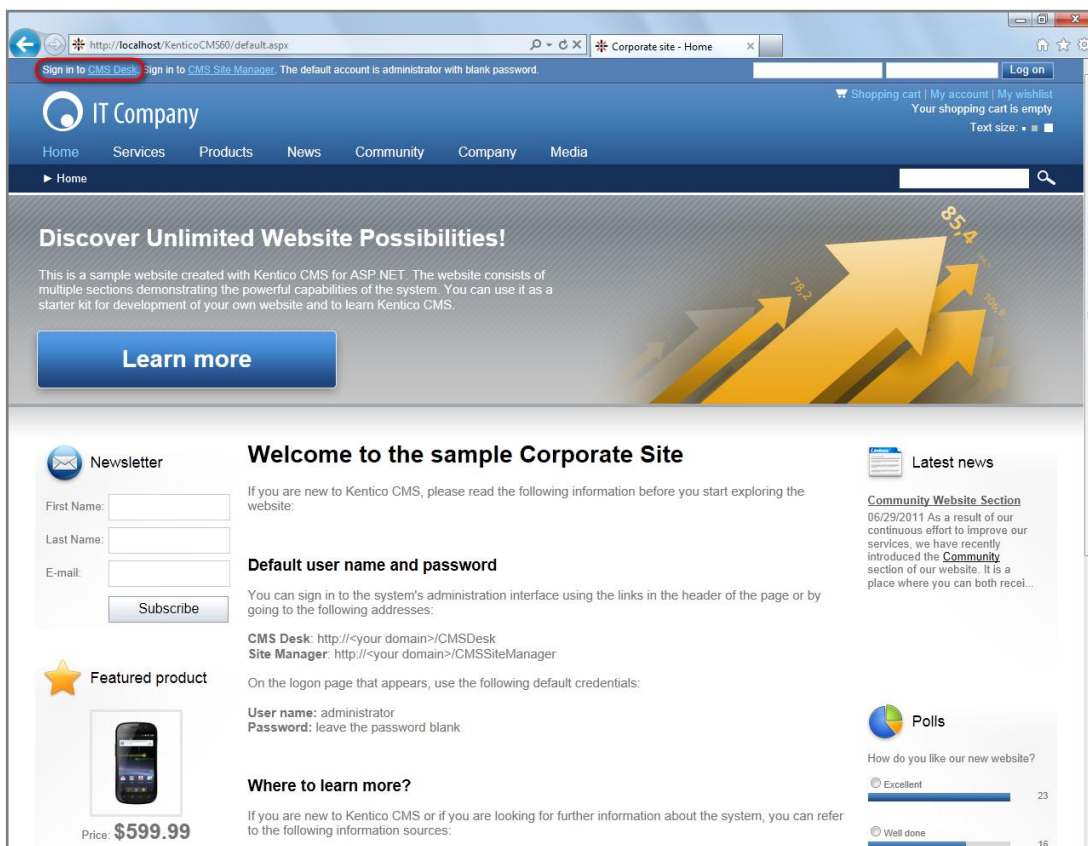
### Kentico CMS overview

Kentico CMS for ASP.NET is a piece of software that allows a person without any programming knowledge to create a powerful dynamic website.

By using Kentico CMS, you will be able to manage and edit the content of your website in a quick, efficient and professional manner.

### Signing in

1. Open your favorite web browser and go to your website.
2. Click **Sign in to CMS Desk** at the top of your website.
  - This link is only available on the sample Corporate Site. On your own website, you will need to go to **`http://<your website>/cmsdesk`** – e.g.: **`http://www.mydomain.com/cmsdesk`**.



3. Type in your user name and password.

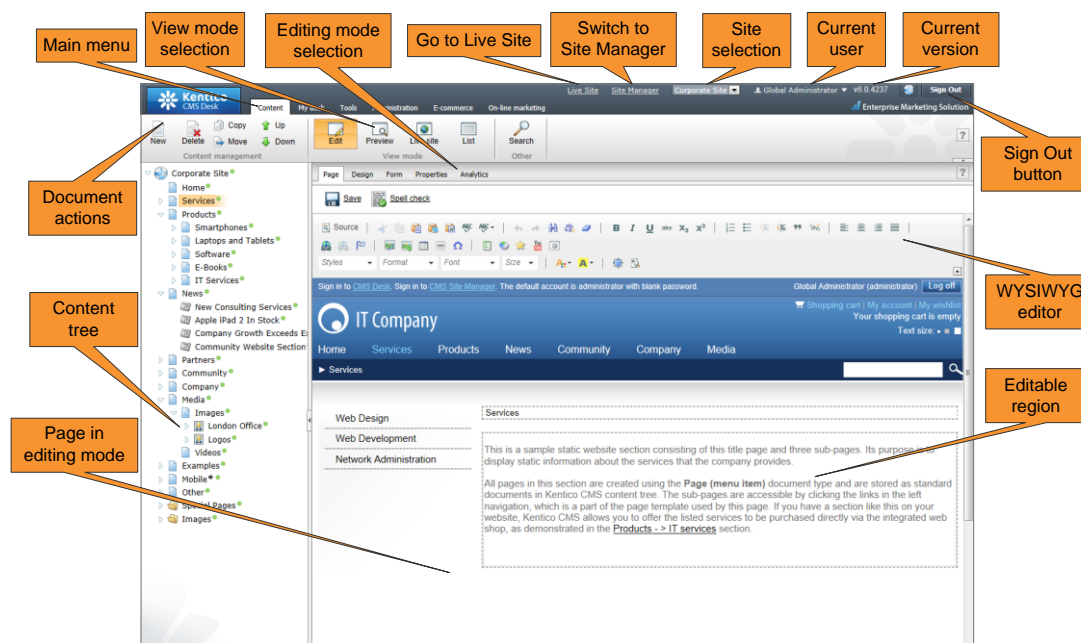


4. Click **Log on**.

The system logs you on to the CMS Desk for the first time.

## User interface overview

The user interface of Kentico CMS consists of several sections. You will see that each of these sections has its specific functionality and its logical relation to the others. As a whole, the sections form a graphical interface that is easy to use and quick to navigate through.



The main sections are:

- **Main menu** where you can switch between the Content, My Desk, Tools, Administration, E-commerce and On-line marketing sections. You will be using only the Content tab most of the time.
- **Document actions** toolbar where you can create, delete, edit, copy, move or sort documents.
- **View mode selection** that allows you to choose between editing, preview, live view and list view depending on whether you want to edit content of your website or just see how it looks in a browser.
- **Content tree** that displays the structure of your website and allows you to organize documents/pages in it.
- **Editing mode selection** where you can choose the way you want to edit the content of the page. You can choose from editing of the content of your page, editing document fields, product or document properties and viewing page analytics. If you're an administrator, you can also design the page template.

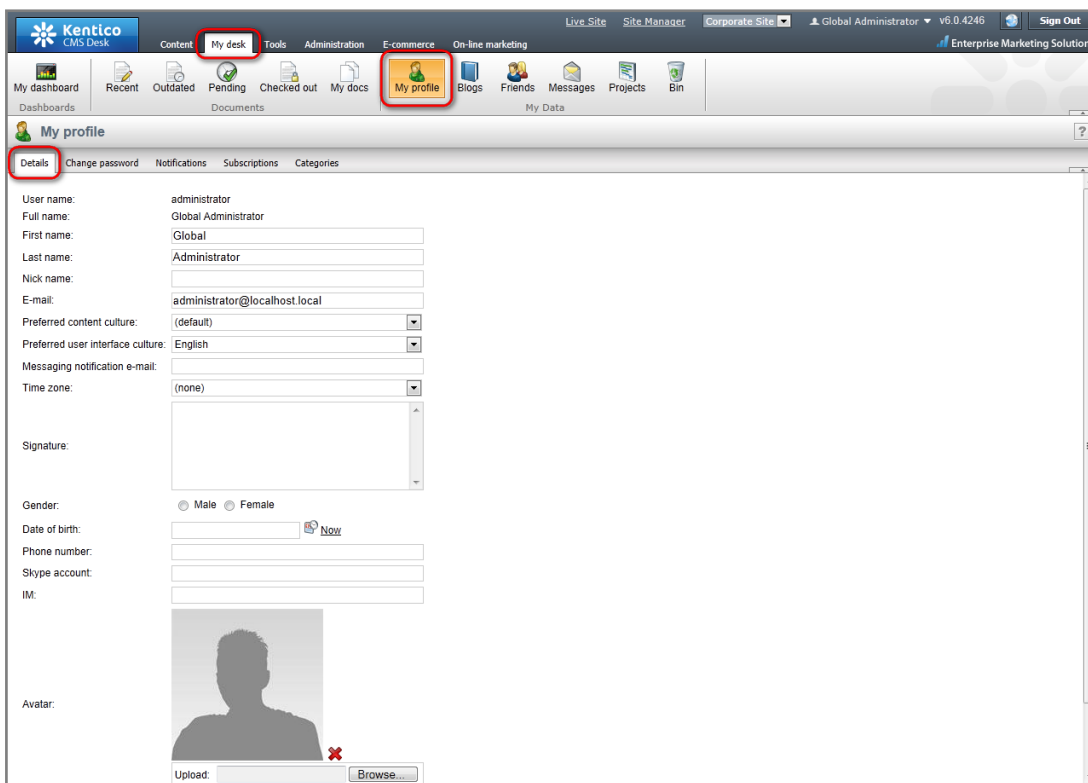
- **Editing/viewing space** where the page chosen in the content tree is displayed in the mode that has been selected in the view and page editing toolbar.

## Managing my profile

### Changing my e-mail and preferred language

Now you will learn how to change your e-mail and preferred language.

1. Switch to the **My Desk** tab on the main menu.
2. Choose **My profile** in the ribbon menu.
3. Navigate to the **Details** tab.



4. Place the cursor into the **E-mail** text box and type in your e-mail address.
5. Click the **Preferred content culture** drop-down list and choose the preferred culture.

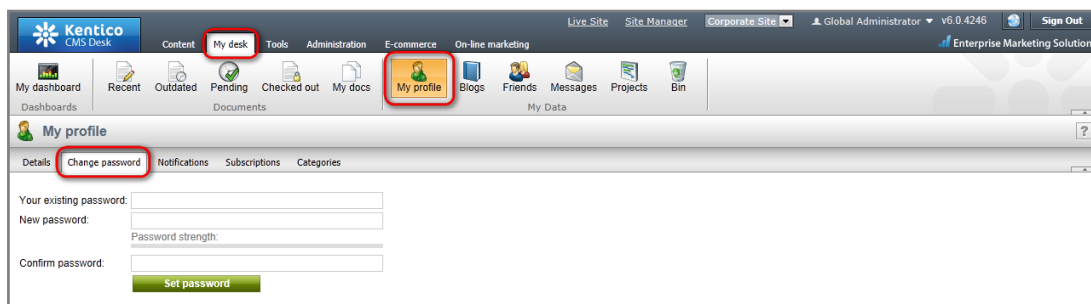
That's how you change your e-mail address and your preferred content language.



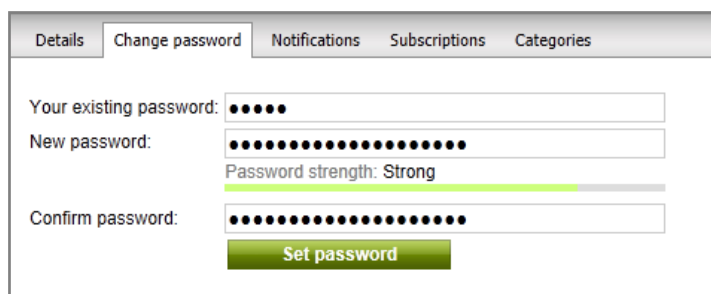
## Changing my password

Now you will learn how to change your password for logging in to the CMS Desk.

1. Switch to the **My Desk** tab on the main menu.
2. Select **My profile** in the ribbon menu.
3. Choose the **Change password** tab.



4. Enter your old password into the **Your existing password** textbox.
  - Leave blank if you don't have to use password for signing in to the CMS Desk.
5. Type in your new password to the **New password** textbox.
6. Re-type the password again to the **Confirm password** textbox.
7. Click **Set password**.



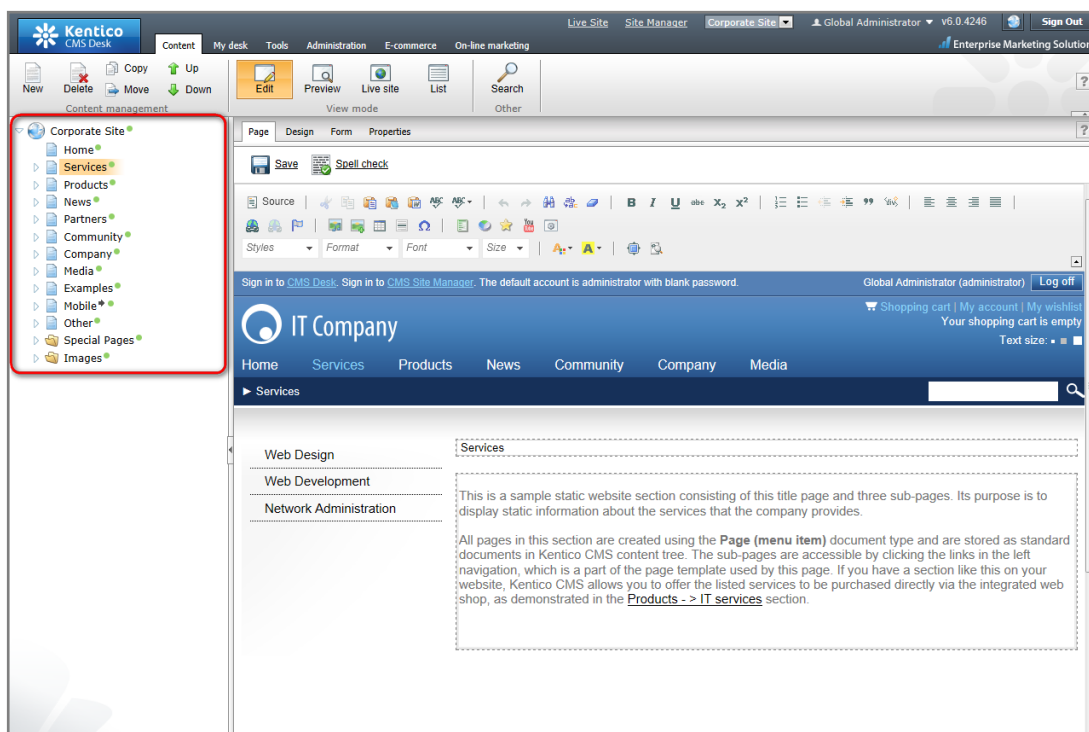
That's how you change your password for the access to the CMS Desk.

## Getting started

### Creating a new web page

Let's start from the beginning, that is, with creating a new web page.

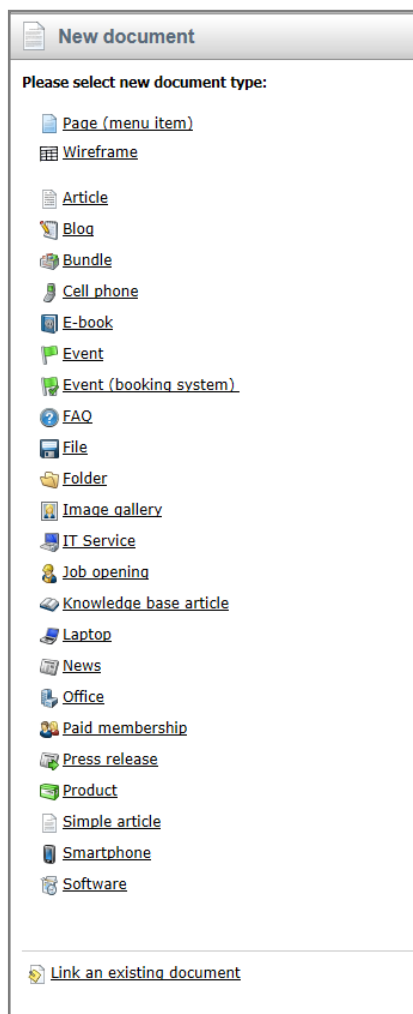
1. Choose a place in the **Content tree** where you want your new page to be located in the structure of your website.



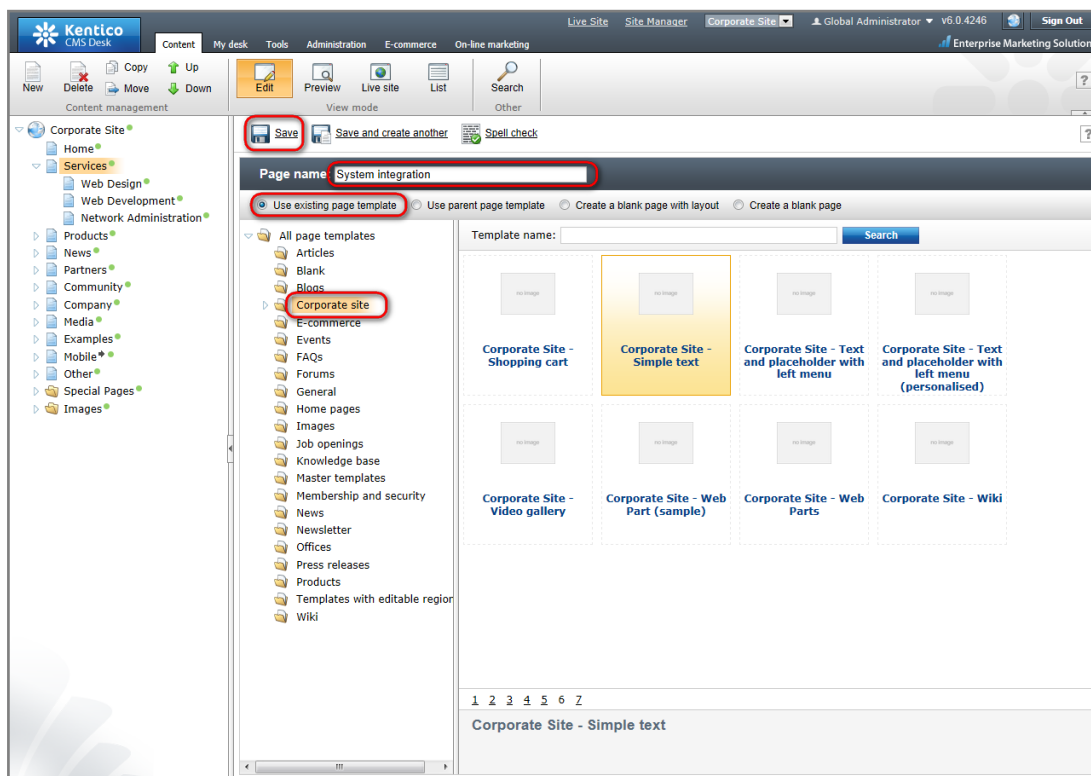
2. Click on an existing document (for example, **Services**).
  - The new page will be added below the document you've just clicked on.
3. Click the **New** button in the document action toolbar.



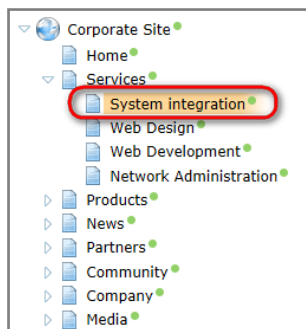
- On the right side in the editing/viewing space, you should see the types of documents you are allowed to create in the chosen location.



4. Click the **Page (menu item)** option.
5. Enter the name of your new web page: *System integration*.
6. Choose to **Use an existing page template** and select the **Corporate site/Corporate Site - Simple text** template.
  - If you're an administrator, you can also choose to create a blank page and create it from scratch.
7. Click **Save**.



Now you can see your **System integration** page added to the content tree under the already existing page.



You've just created your first web page.

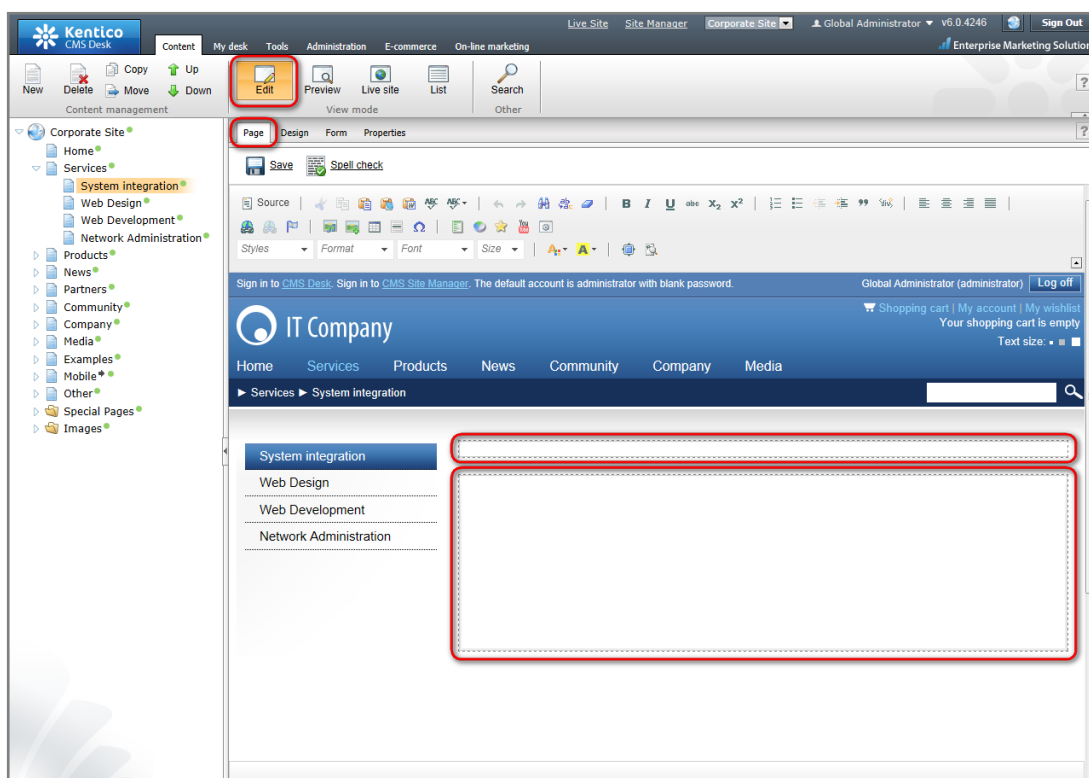
## Editing page content

Now we will edit the content of the newly created page.

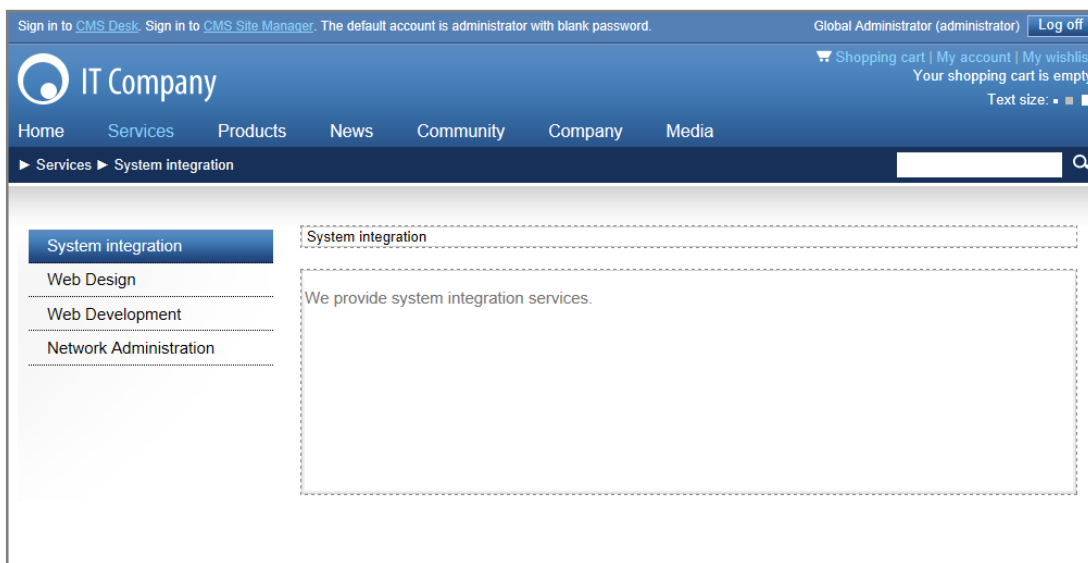
Click on the **System integration** page in the content tree on the left. On the right side in the **Editing/viewing space**, you can see its content. As we have used the template with two

editable regions – header text and content text, we are now able to enter some information into these regions.

Please make sure that the **Page** tab in the page editing mode toolbar is selected. Only then, you are able to edit content in the editable regions of your page.



1. Place the cursor into the first text box and type in *System integration*.
2. Enter *We provide system integration services* in the second text box.



3. Click **Save** at the top-left.

Now switch to the **Live site** mode in the page editing mode toolbar. You should see the System integration page with updated content.



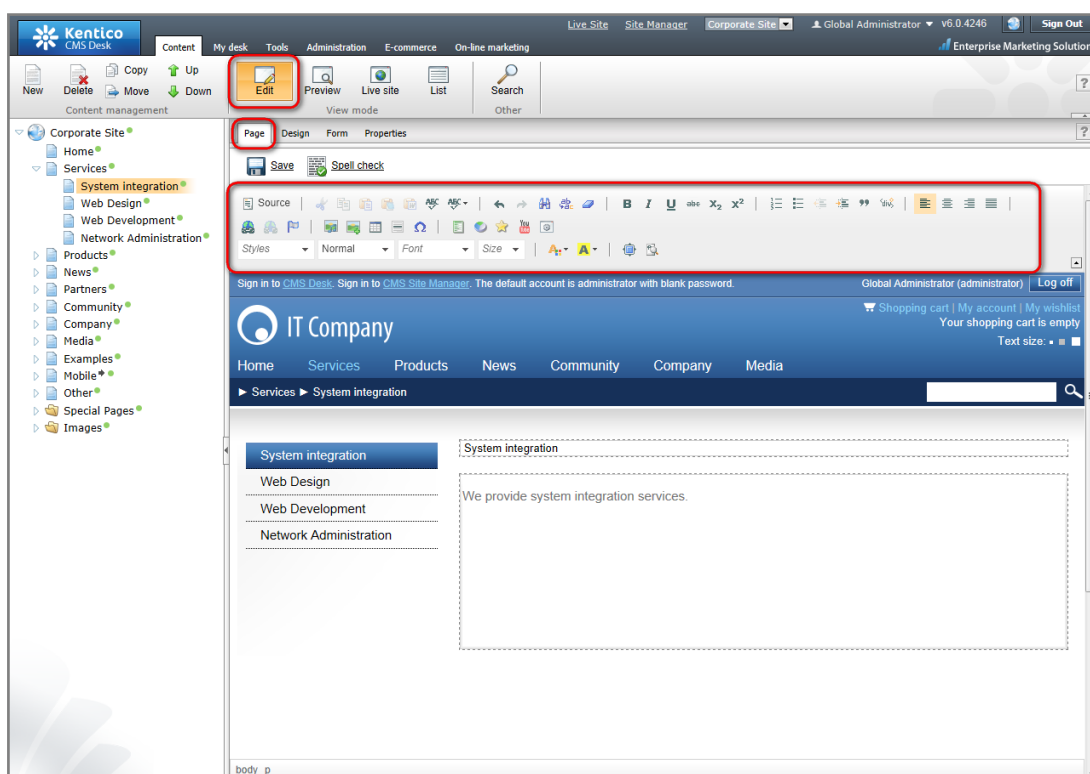
You've just entered your first content to your web page.

## Using the editor

### Using What You See Is What You Get editor

In Kentico CMS, you can use the WYSIWYG (What You See Is What You Get) editor to create web content without HTML knowledge. Its functions are similar to Microsoft Word.

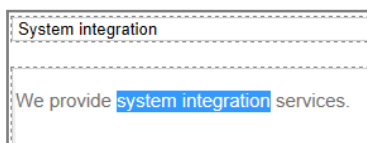
Open your **System integration** page and choose the **Edit** mode and click the **Page** tab so that you can enter content into the editable regions. The WYSIWYG editor toolbar should be visible.



### Text formatting

Now let's take a look at how you can change the thickness and size of your text content.

1. Highlight the part of your text you want to change (e.g., **system integration**).



2. Click on **Bold** sign in the WYSIWYG editor. The highlighted text changes immediately.
3. Highlight another part of the text.
4. Change its size by clicking the **Size** drop-down menu and choosing **16**.



5. Click the **Save** button at the top.

Switch to the **Live site** viewing mode to see your text with changed formatting.

That's how you change formatting of your text.

## Inserting images

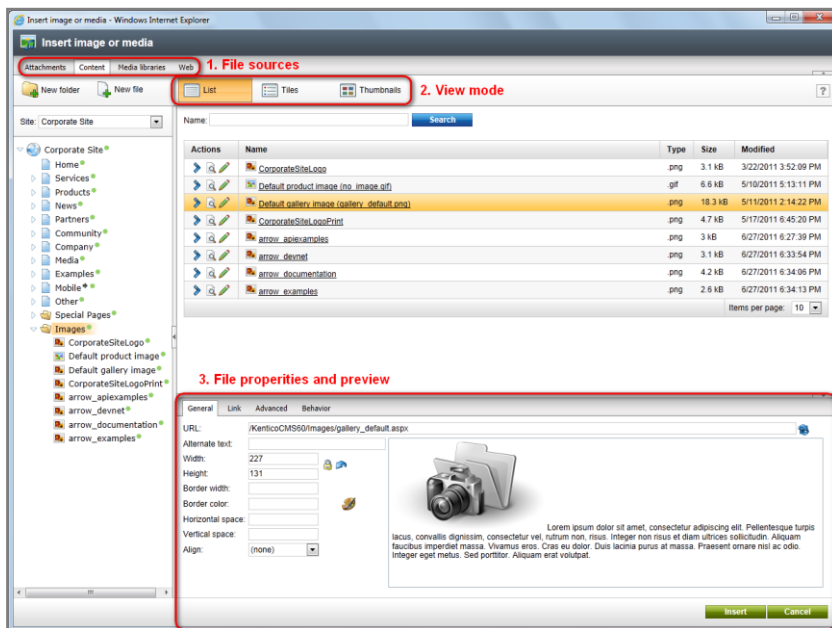
Very often, you will want to have some pictures on your website. You can use the WYSIWYG editor for this task as well.

1. Switch to the **Edit** mode.
2. Click the **Insert/Edit image or media** icon on the WYSIWYG toolbar.

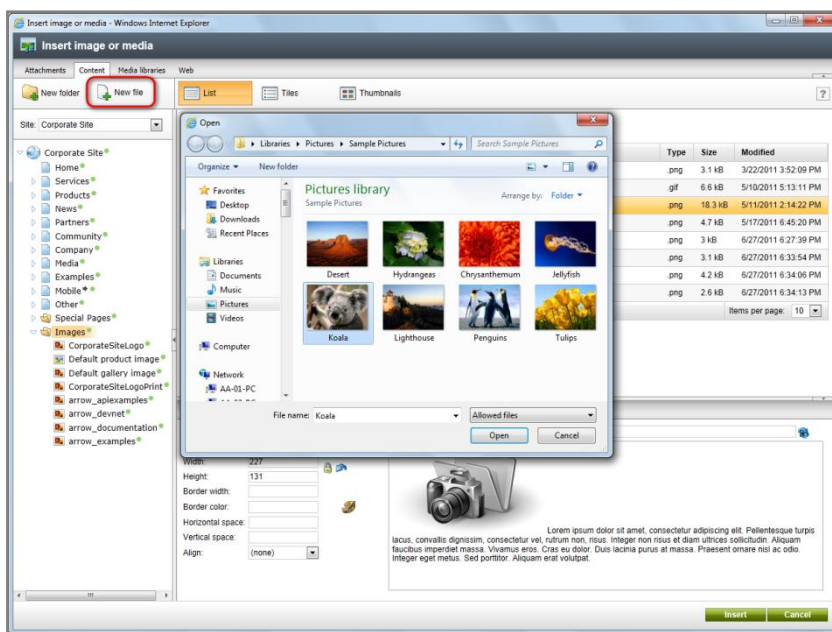


- The system displays the **Insert image or media** dialog.



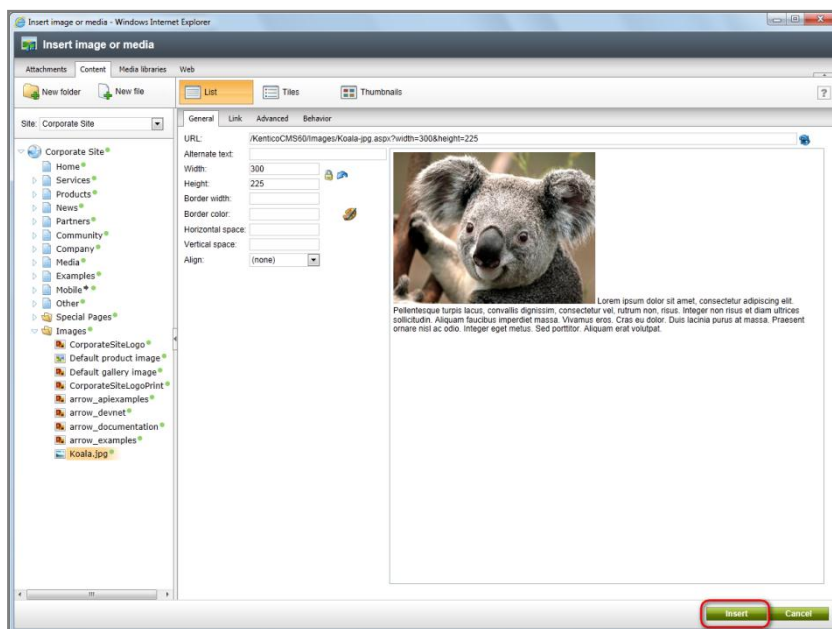


3. Choose the **Content** tab.
4. Click the **Images** folder within the content tree.
  - On the right side, you should see the images already uploaded on the server. If you wish, you can choose one of these images instead of uploading a new one.
5. Click **New file** at the top to upload a new image to the server.



- The system displays a preview of the uploaded image.

6. Change the properties of the picture (width and height of the picture, its border, vertical and horizontal spacing and alignment) according to your needs.



7. Click **Insert**.
  - You should see the picture being pasted into the text.
8. Click **Save**.

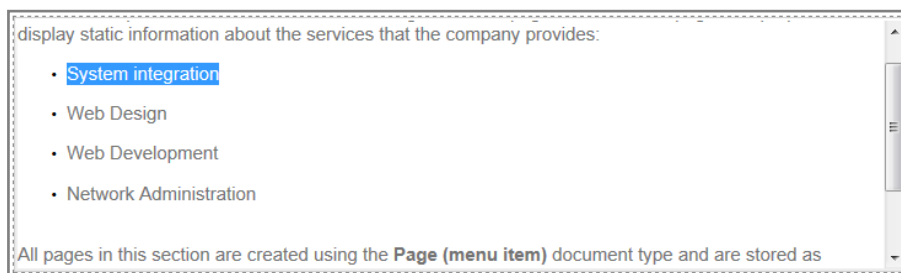
Now switch to the **Live site** to see the result of your efforts.

In a similar manner, you can upload flash movies to your website.

## Creating links

Now you will learn how to add links to your web content.

1. Switch back to **Edit** mode.
2. Highlight the text you want to link to some part of your website.



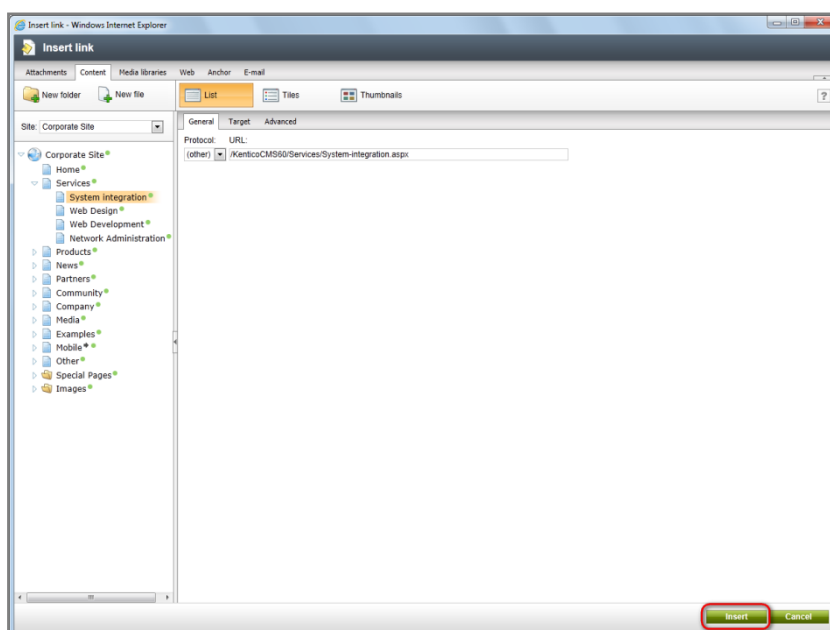
3. Click the **Insert/Edit Link** button in the WYSIWYG editor toolbar.



- A new Insert Link dialog opens.

4. Choose the target page and click **Insert**.

- Please note you can choose what target the link should point at. Possible choices are Attachments, Content, Media Libraries, Web, Anchor, E-mail.



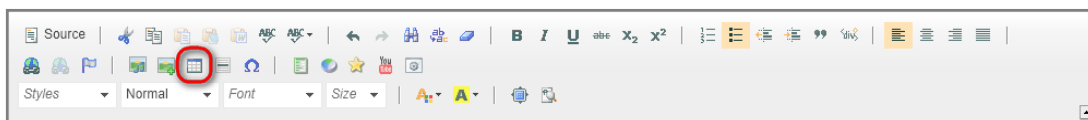
5. Click **Save** on the document.

Switch to the **Live Site** mode. If you click the newly created link, you should be redirected to the page chosen in the previous step.

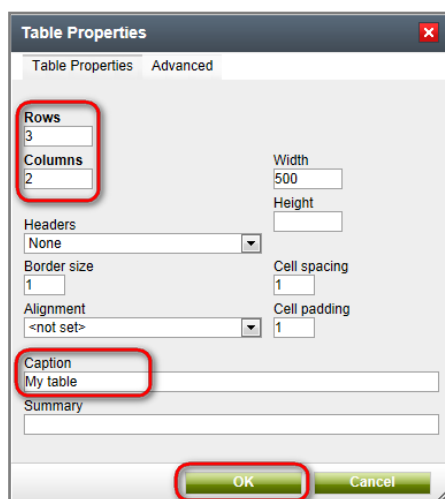
## Inserting tables

Now you will learn how to add a table to your website.

1. Click the **Insert/edit table** icon on the WYSIWYG editor toolbar.



2. Change the number rows to 4 and the number of columns to 5 in the **Table Properties** dialog.
3. Type *My table* into the **Caption** field
4. Click **OK**.



You have added a table to the web content.

## Editing structured documents

Unlike pages with editable regions, structured documents have specific fields that you need to fill in. For example, the news have fields like News title, Release date, News summary and News text.

These fields can be edited on the **Form** tab rather than on the **Page** tab.

## Creating a news item

Now you will learn how to create a news item and add it to the news section.



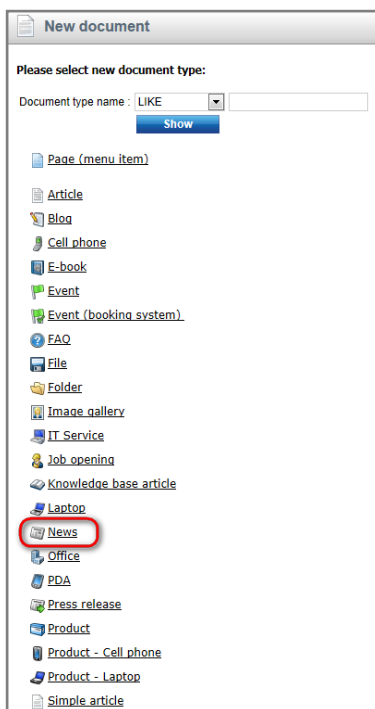
**Note:**

Your news item must be added to the section that can show them. In the sample **Corporate Site**, it is the **News** page but it may be some other page on your site. Please contact your administrator.

1. Click the **News** page in the content tree.
2. Click the **New** button on the document action toolbar.

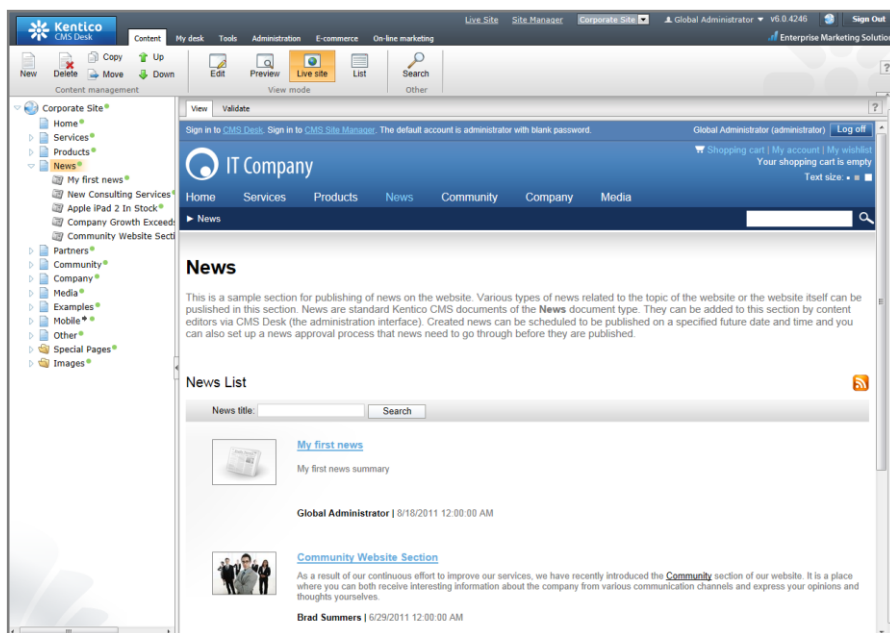


3. Choose the **News** document type.



4. Fill in the News document properties:
  - In the **News Title** field type *My first news*.
  - Click the **Now** button to fill in the **Release date** value.
  - In the **News Summary** field type *My first news summary*.
  - In the **News Text** field type *My first news* and skip the remaining fields.
5. Click **Save and create another**.
6. Fill in the details of a second News document:
  - In the **News Title** field type *My second news*.
  - Click the **Now** button to fill in the **Release date** value.
  - In the **News Summary** field type *My second news summary*.
  - In the **News Text** type *My second news text* and skip the remaining fields.
7. Click **Save**.

Now click on the **News** page in the content tree and switch to the **Live Site** mode. You can see your two news items added to the news page.

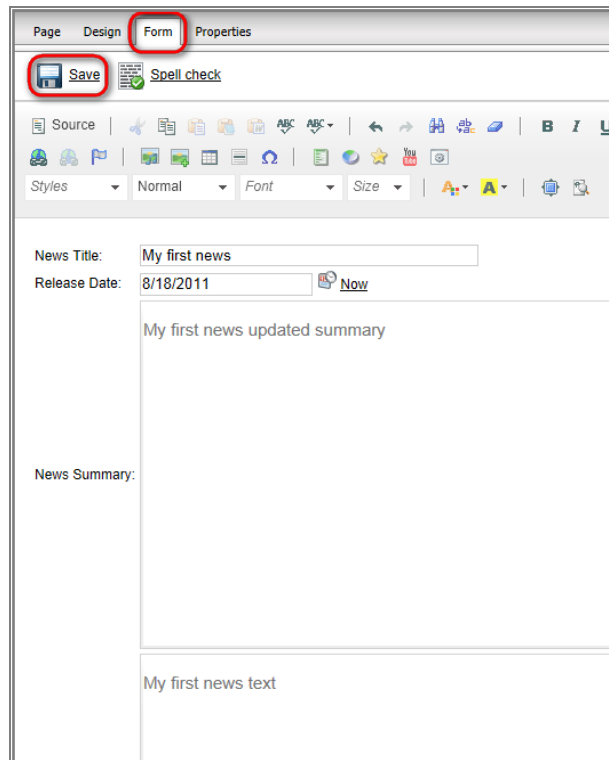


You have just learned how to add a news item.

## Editing a news item

Now you will learn how to edit the content of the news item you have just created.

1. Click **My First news** in the content tree.
2. Choose the **Form** tab.
3. Change the **News Summary** text to *My first news updated summary*.
4. Change the **News Text** to *My first news updated text*.
5. Click **Save**.



Switch to the **Live site** to see your updated news.



## Deleting, moving and sorting documents

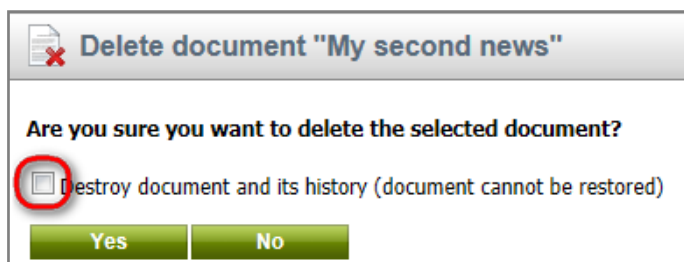
### Deleting and restoring a document

In this section, you will learn how to delete a document and how to restore it later on.

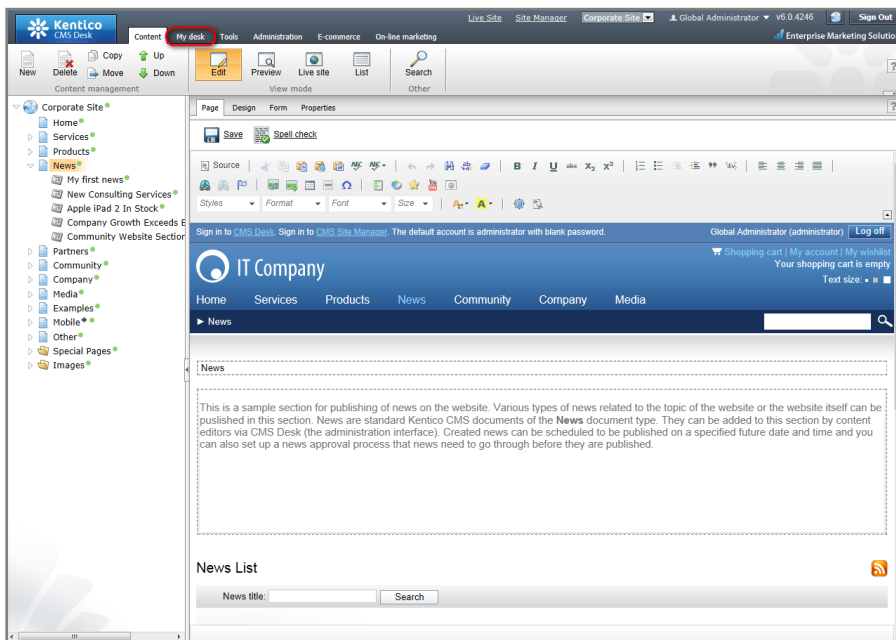
1. Click the **My second news** item in the content tree.
2. Click the **Delete** button in the document action toolbar.



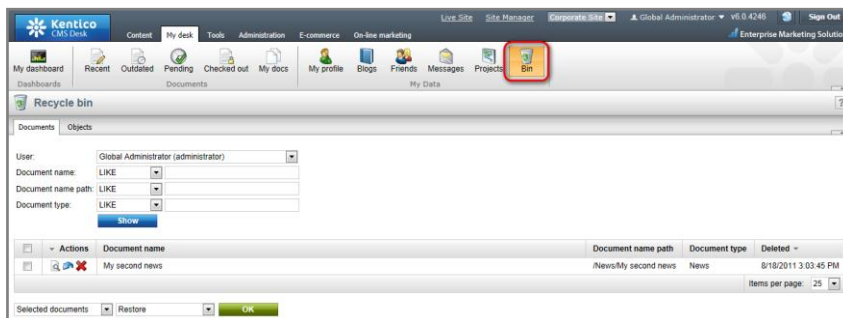
3. Make sure that the **Destroy document and its history** checkbox is NOT checked.
4. Click **Yes** (You may not see the Destroy document option if you do not have sufficient permissions.)



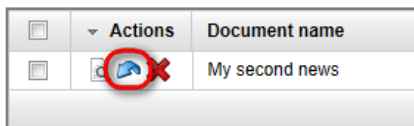
5. Click the **My desk** tab at the main menu.



6. Click on a **Bin** icon in the documents section of the ribbon bar at the top.
  - You will see all the deleted documents on the right side.



7. Find the document you have just deleted and click **Restore**.



8. Switch back to the **Content** tab and you will see the restored **My second news** document added back to the default location.

You've just learned how to delete and restore a document.

## Changing document order

Here you will learn how to change the order of documents in the content tree.

1. Click the page you want to relocate (e.g. the Services page in the Corporate Site) in the content tree
2. Click the **Down** button in the document action toolbar.



- You'll see that your page has been moved.

Switch to the **Live site** view mode to see that your page has been moved in the main menu as well.

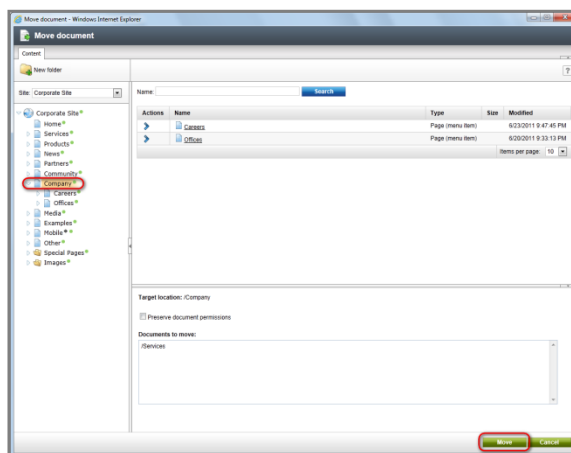
## Moving documents to another section

It's important to realize that the **Up** and **Down** buttons in the document action toolbar can be used only to move documents in a one level of the content tree. To move documents to any location in the structure of website you can use the **Move** button.

1. Click the page you want to move in the content tree (e.g. the Services page).
2. Click the **Move** button in the document action toolbar.



- A **Move document** dialog appears.
3. Click on the document where you want to move your page (e.g. the Company section).
  4. Click **Move** button at the bottom.



Your page has been moved to the chosen location.

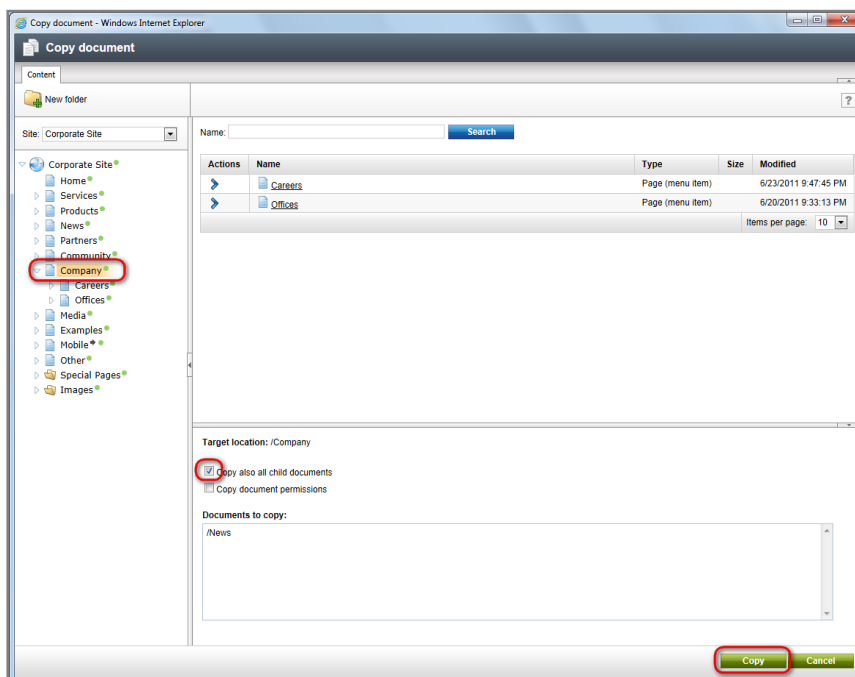
## Copying a document

Now you will learn how to copy a document from one place to another.

1. Click on the document you want to copy (e.g. the News page) in the content tree.
2. Click the **Copy** button on the document action toolbar.



3. In the **Copy document** dialog click on the location where you want to copy your document (e.g. the Company section).
  - If you want to copy all child documents under, please check the **Copy also child documents** option.
4. Click the **Copy** button at the bottom.



You have just learned how to copy a document.

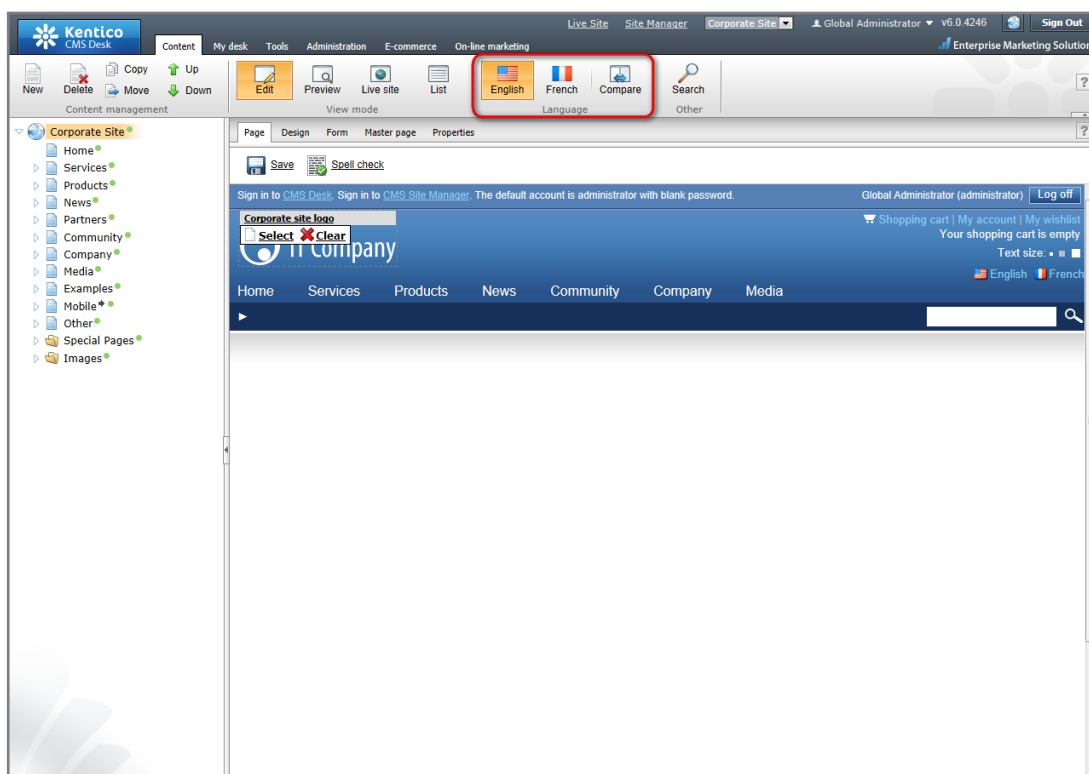
## Translating documents

You may want to have your website available in multiple languages so that it can be useful for many visitors with various cultural backgrounds.

### Note:

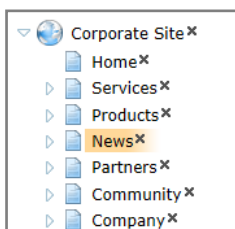


For this part of the guide, your website has to be configured for multiple language versions. You should see the language option drop-down menu or the flag selector in the language toolbar (when there are more than 5 cultures, you'll see a drop-down list instead). If you cannot see it, please contact your administrator to configure multilingual support for you.

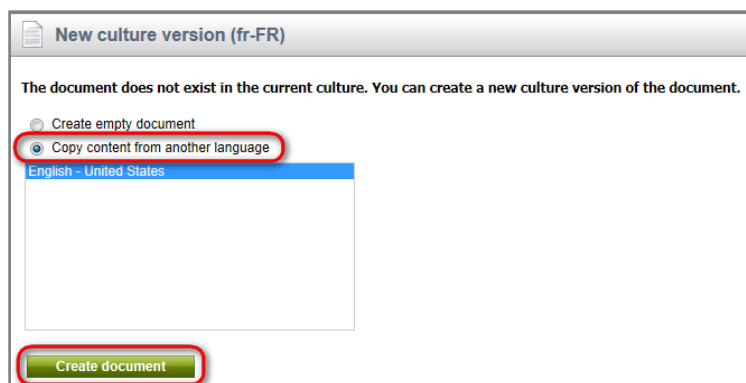


1. Make sure you are in the editing mode.
2. Choose from the **Language** drop-down menu (flag selector) the language to which you want to translate your documents.
3. In the content tree, click one of documents with a little cross next to it.

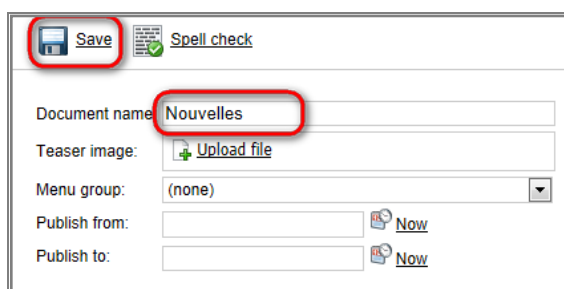
- The cross icon indicates the document hasn't been translated yet.
- The system displays a dialog for creating a translated version of the document.



4. Choose the **Copy content from another language** option.
5. Select from which language version you want your document to be copied.
6. Click the **Create document** button.



7. In the **Document name** field enter the translated title of your page.
8. Click **Save**.



9. Switch to the **Page** editing mode. You may now start translating the content of your page.
  - Please note, that you have to translate the master page (Root document) the same way to see the whole content of the page.

You have just learned how to translate a document to another language.

## Workflow and versioning



### Note:

In the Workflow tutorial, we assume that your website has been configured for workflow. For more information please contact your administrator or consult the Kentico CMS Developer's guide.

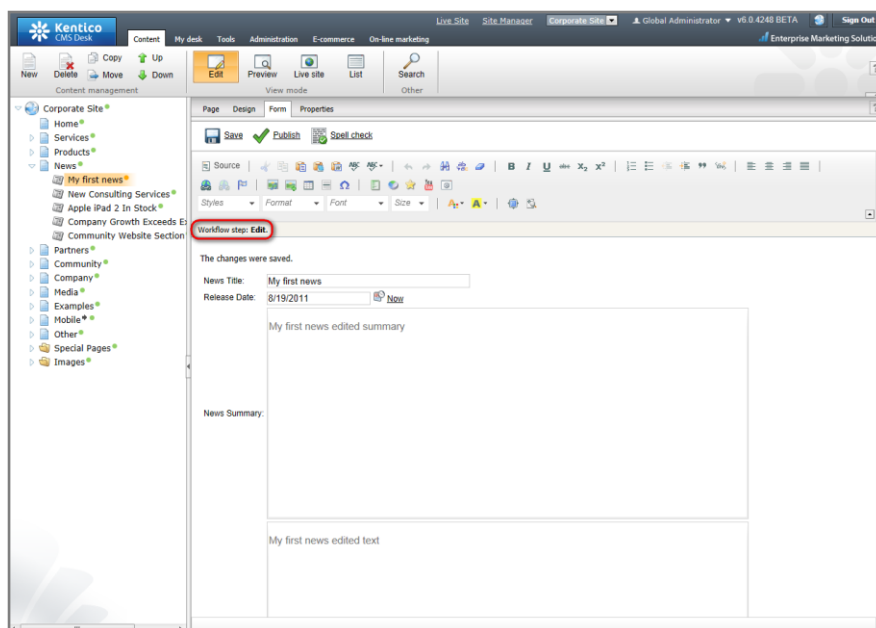
## Publishing a document



### Note:

For this part of the user's guide, we use an example with three default workflow steps – edit, publish, archive. Your website might use different workflow steps. However, the procedure will be the same.

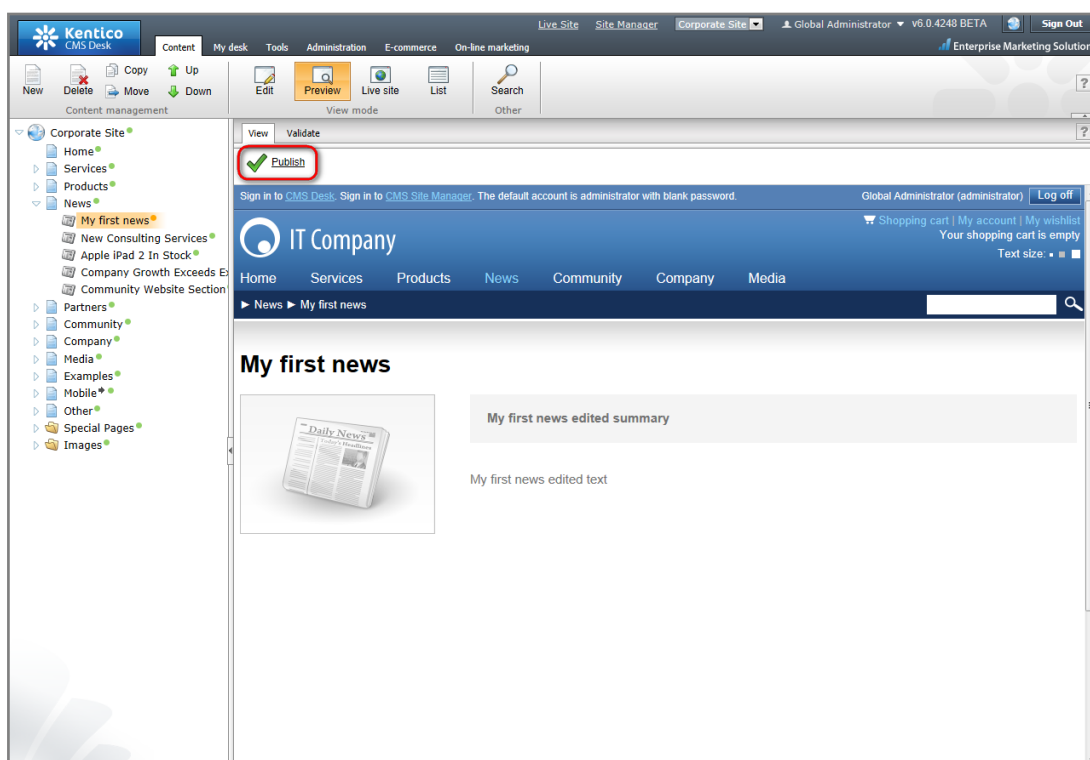
1. In the content tree on the left side, choose the document you want to edit.
  - At the top of the editing/viewing space, there is a bar indicating your current **Workflow step: Edit**.



2. Edit the content of your page.



3. Click **Save**.
4. Switch to the **Preview** viewing mode.
  - You can see your page updated. However, you won't see your changes in the **Live site** viewing mode so far because your updated page has not been published yet and it's still in the **Edit** workflow step.
5. Click the **Publish** icon.



Now switch to the **Live site** to see that your edited page has been published and is now visible on your real website.

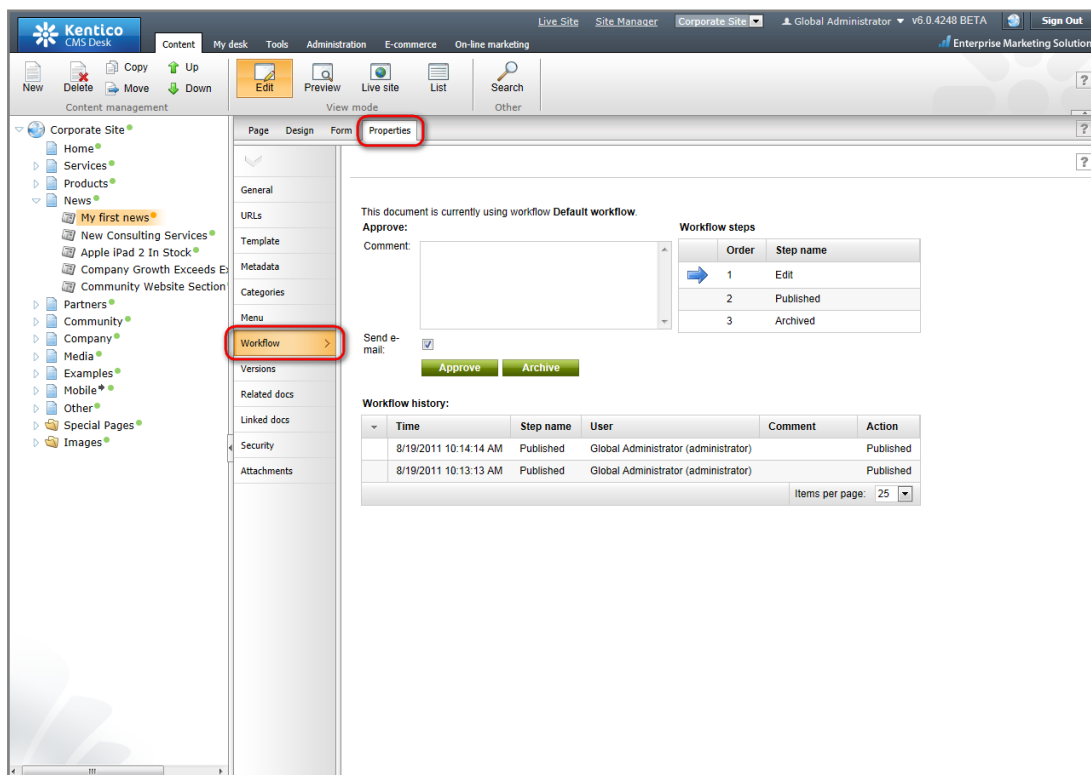
That's how you get your document through the workflow steps to get published.

## Archiving a document

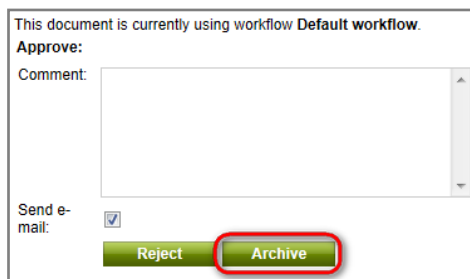
You can use the Kentico CMS to archive a document from your website. It won't be visible to visitors but it will be stored in a database ready to be posted again any time you need.

1. Choose the document you want to archive in the content tree.
2. Choose the **Edit** viewing mode.

3. Click the **Properties** tab.
4. In the vertical menu on the left, switch to the **Workflow** tab.




5. Click the **Archive** button.



That's how your document is withdrawn from the website and stored in the archive.

## Versioning and rollback

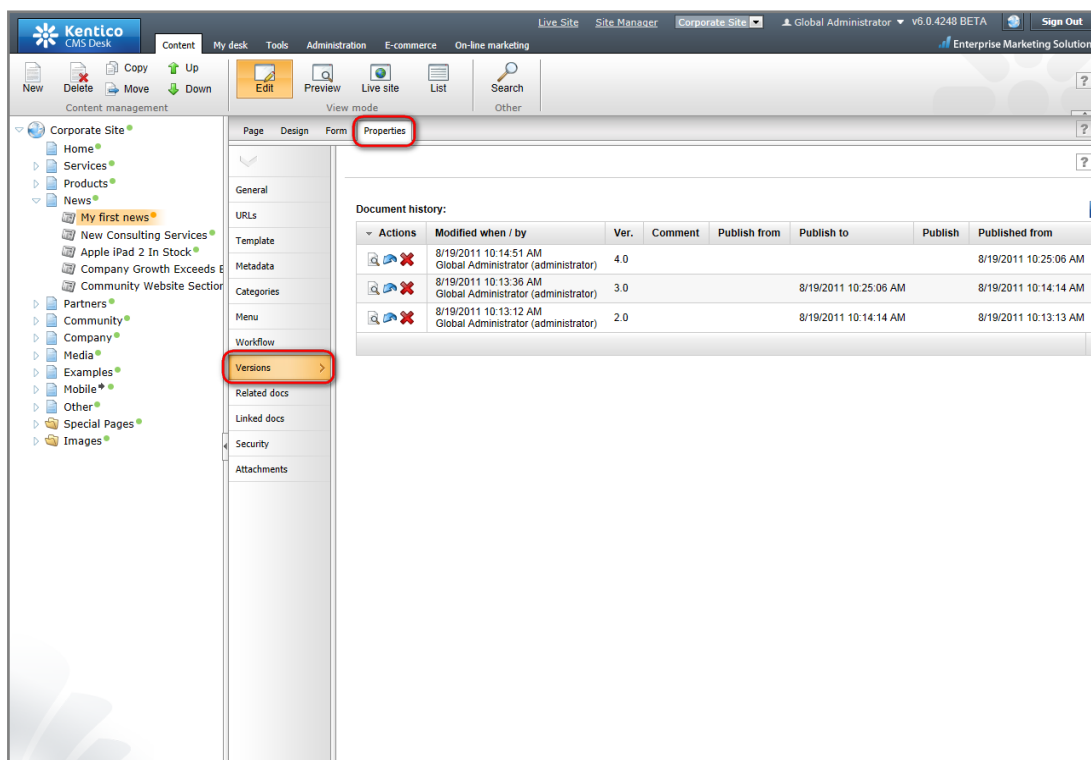
You may want to list through previous versions of your document and choose one of the older versions to be published on the website. For that you can use Kentico CMS versioning and rollback.

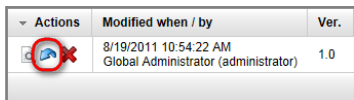




**Note:**

Versioning and rollback work only for documents that use workflow.


1. Choose the document you want to change in the content tree.
2. Make sure you are in the **Edit** viewing mode.
3. Go to the **Properties** -> **Versions**.
  - On the right side, you can see the list of versions of the document.



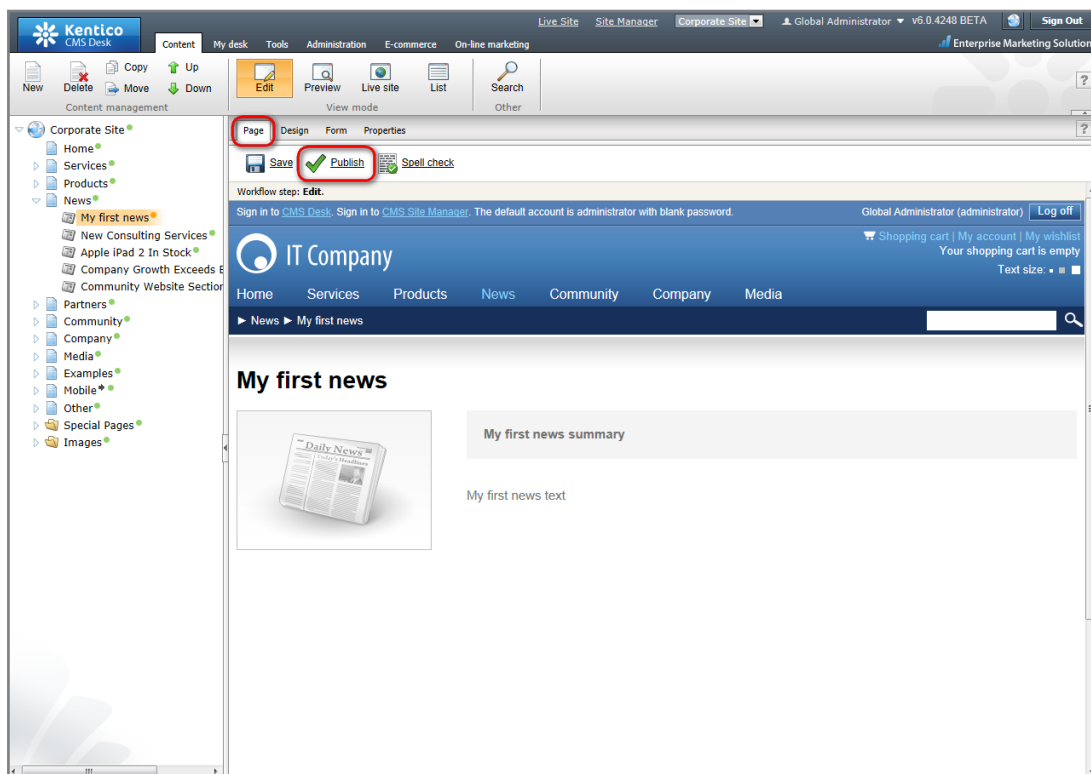
4. Choose the version you want to publish.
  5. Click the **Rollback version** button.
- 

Actions	Modified when / by	Ver.
 	8/19/2011 10:54:22 AM Global Administrator (administrator)	1.0
6. Click **OK** to return to the selected version of the document.
  7. Switch to the **Workflow** tab in the vertical menu.

- You will see that the restored version of the document is in the workflow step **Edit**. You need to publish it again to be visible on the live site.

Workflow steps		
	Order	Step name
	1	Edit
	2	Published
	3	Archived

8. Switch to the **Page** editing mode.
9. Click **Publish**.




Switch to the **Live site** viewing mode to see the document published.

You have successfully rolled back to the older version of your document and you have published it on your website.

## Security

### Granting permission to edit a document

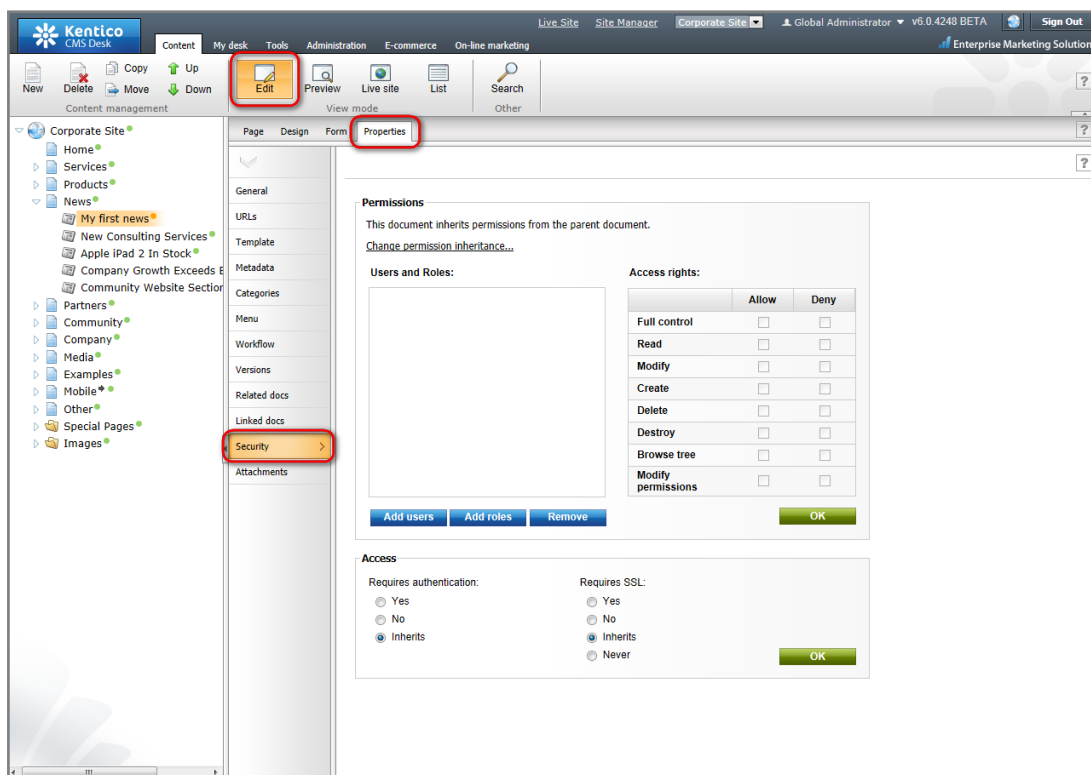
**Note:**



To complete this part of the tutorial, you have to be a user with access rights for granting permissions to other users.

For more information about security in Kentico CMS please consult the **Developer's Guide**.

1. In the content tree, choose the document to change its security settings.
2. Make sure you are in the **Edit** viewing mode.
3. Go to **Properties -> Security**.



4. Click **Add roles** button.

**Permissions**

This document inherits permissions from the parent document.  
[Change permission inheritance...](#)

**Users and Roles:**

**Access rights:**

	Allow	Deny
Full control	<input type="checkbox"/>	<input type="checkbox"/>
Read	<input type="checkbox"/>	<input type="checkbox"/>
Modify	<input type="checkbox"/>	<input type="checkbox"/>
Create	<input type="checkbox"/>	<input type="checkbox"/>
Delete	<input type="checkbox"/>	<input type="checkbox"/>
Destroy	<input type="checkbox"/>	<input type="checkbox"/>
Browse tree	<input type="checkbox"/>	<input type="checkbox"/>
Modify permissions	<input type="checkbox"/>	<input type="checkbox"/>

5. In the **Select roles** dialog choose **CMS Editor**.
6. Click **OK**.

Select roles -- Webpage Dialog

**Select roles**

Role name or its part:

<input type="checkbox"/>	Role name
<input type="checkbox"/>	Authenticated users
<input type="checkbox"/>	CMS Basic users
<input type="checkbox"/>	CMS Community administrators
<input type="checkbox"/>	CMS Designers
<input type="checkbox"/>	CMS Desk Administrators
<input checked="" type="checkbox"/>	CMS Editors
<input type="checkbox"/>	CMS Readers
<input type="checkbox"/>	Everyone
<input type="checkbox"/>	Facebook users
<input type="checkbox"/>	Gold Partners

- The system now adds the CMS Editors role to the list.
7. Click the **Allow** checkboxes in the **Read**, **Modify** and **Create** line.
  8. Click **OK**.

Access rights:

	Allow	Deny
Full control	<input type="checkbox"/>	<input type="checkbox"/>
Read	<input checked="" type="checkbox"/>	<input type="checkbox"/>
Modify	<input checked="" type="checkbox"/>	<input type="checkbox"/>
Create	<input checked="" type="checkbox"/>	<input type="checkbox"/>
Delete	<input type="checkbox"/>	<input type="checkbox"/>
Destroy	<input type="checkbox"/>	<input type="checkbox"/>
Browse tree	<input type="checkbox"/>	<input type="checkbox"/>
Modify permissions	<input type="checkbox"/>	<input type="checkbox"/>

OK

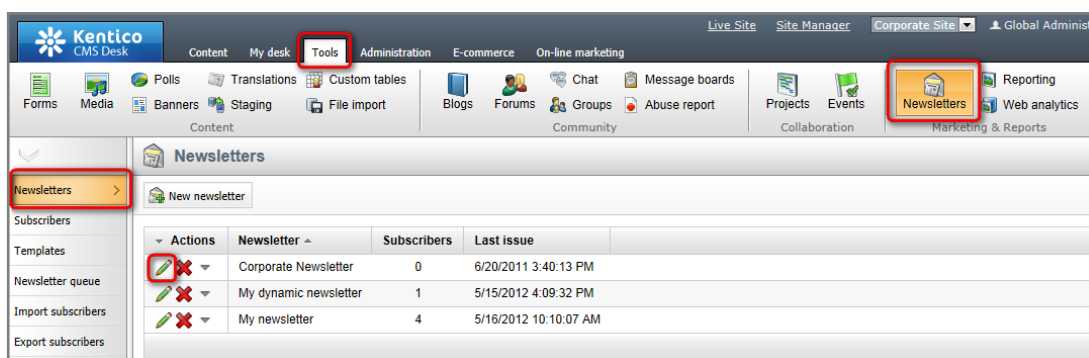
You've just granted editing rights to the **CMS editors** role for the given document. This way you can also set permissions just for particular users.

## Newsletters

You might wish to send your customers e-mail newsletters to inform them about your new products or any other topic. In Kentico CMS, you can create and send out e-mail newsletters in a manner of minutes.

### Creating a newsletter issue

1. Select the **Tools** tab in the main menu of CMS Desk.
2. Choose **Newsletters** in the ribbon menu.
3. On the **Newsletters** tab, click **Edit** next to an existing newsletter (e.g. the sample Corporate Newsletter).



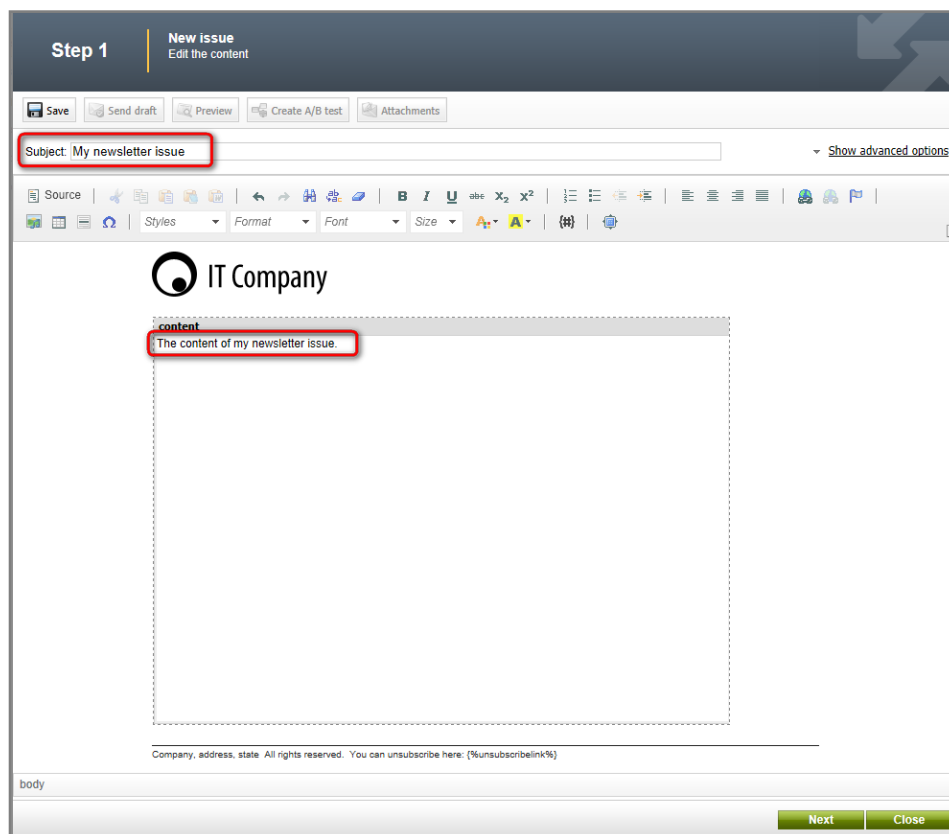
4. On the **Issues** tab, click the **Create new issue** button.
  - The New issue wizard will appear. It will guide you step by step through the process of creating the new issue.



5. In the step 1 of the wizard, enter the following information:
  - *My newsletter issue* into the **Subject** textbox



- The content of my newsletter issue into the **Content** text area
- Please note that you can use the WYSIWYG editor for editing the content of the issue.



6. Click the **Next** button at the bottom of the dialog.
  - The content of the issue will automatically be saved when this is done.
7. In the step 2 make sure the **Send now to all subscribers** option is chosen.
8. Click **Finish** at the bottom.

Your new newsletter issue has been sent to the subscribers.



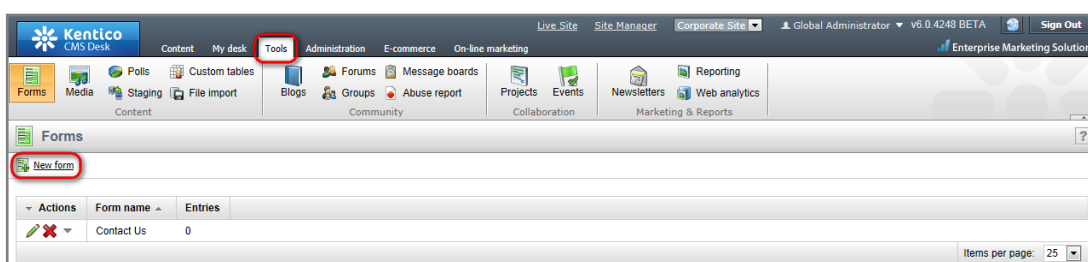
**Note:**

Sending of all e-mails may take some time if there is a large number of subscribers. You can check the status of the e-mails by switching to the **Newsletter queue** tab in the left menu.

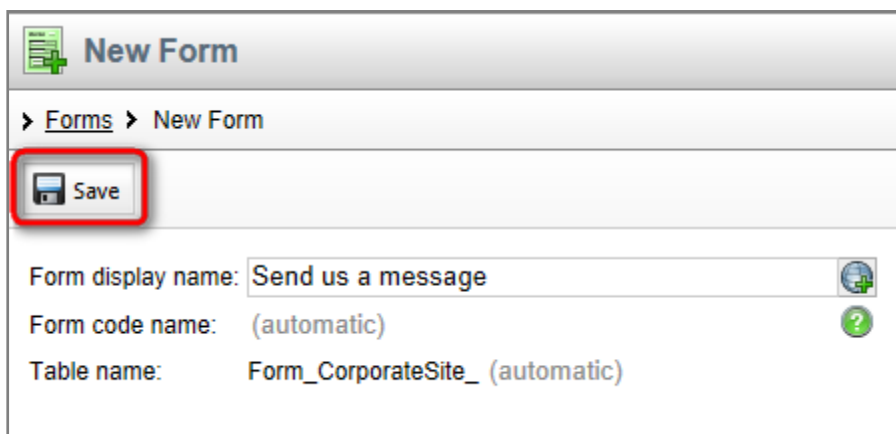
## Forms

### Creating and publishing a new on-line form

1. Go to **Tools -> Forms**.
2. Click on **New form**.

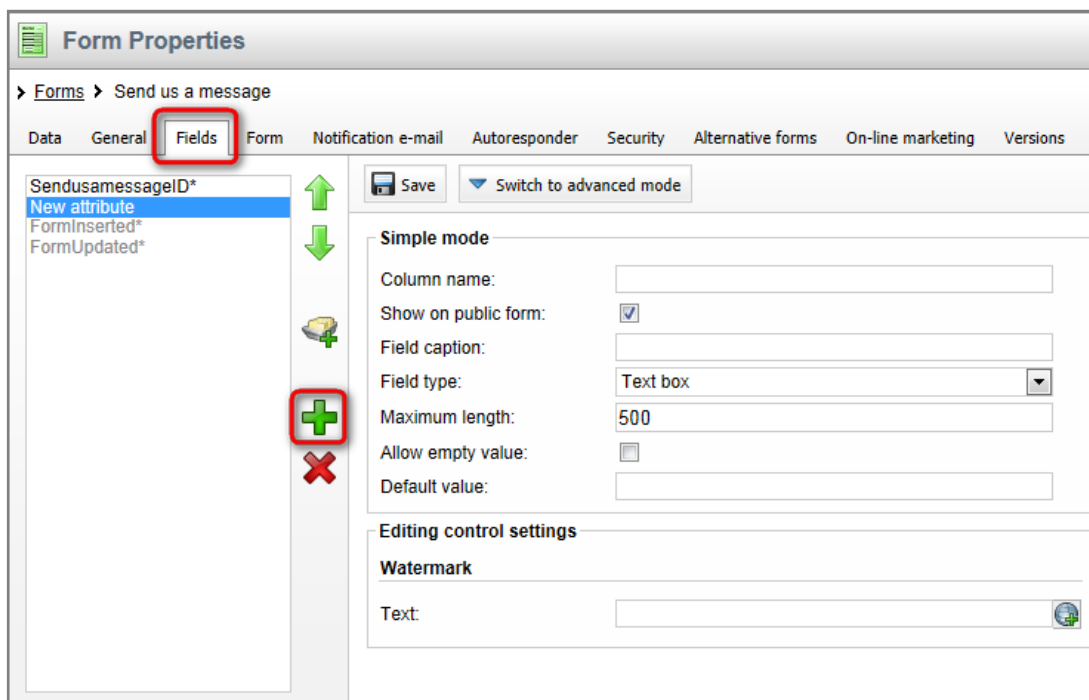


3. Enter *Send us a message* into the **Form display name:** field.
4. Leave the *(automatic)* values in the remaining fields.
5. Click **Save**.



You have just created a blank form. Now you need to add some attributes to the form:

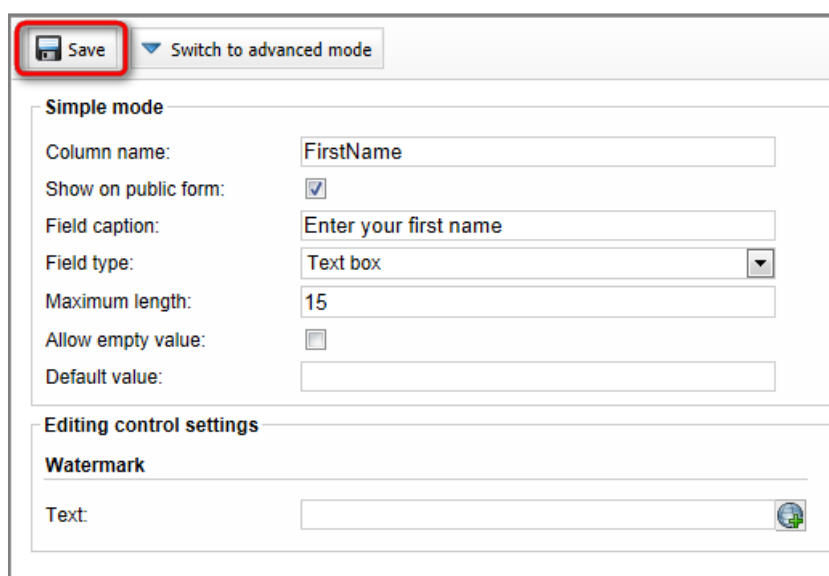
1. Switch to the **Fields** tab.
2. Click on the **New attribute** icon.



3. Enter the following values for the fields:

- **Column name:** FirstName
- **Field caption:** Enter your first name
- **Field type:** Text box
- **Maximum length:** 15

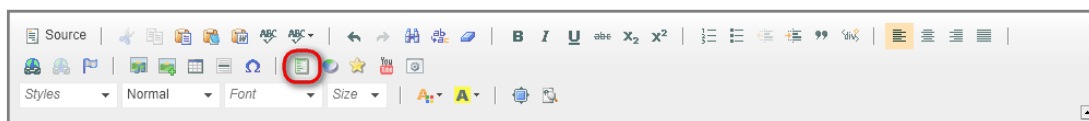
4. Click **Save**.



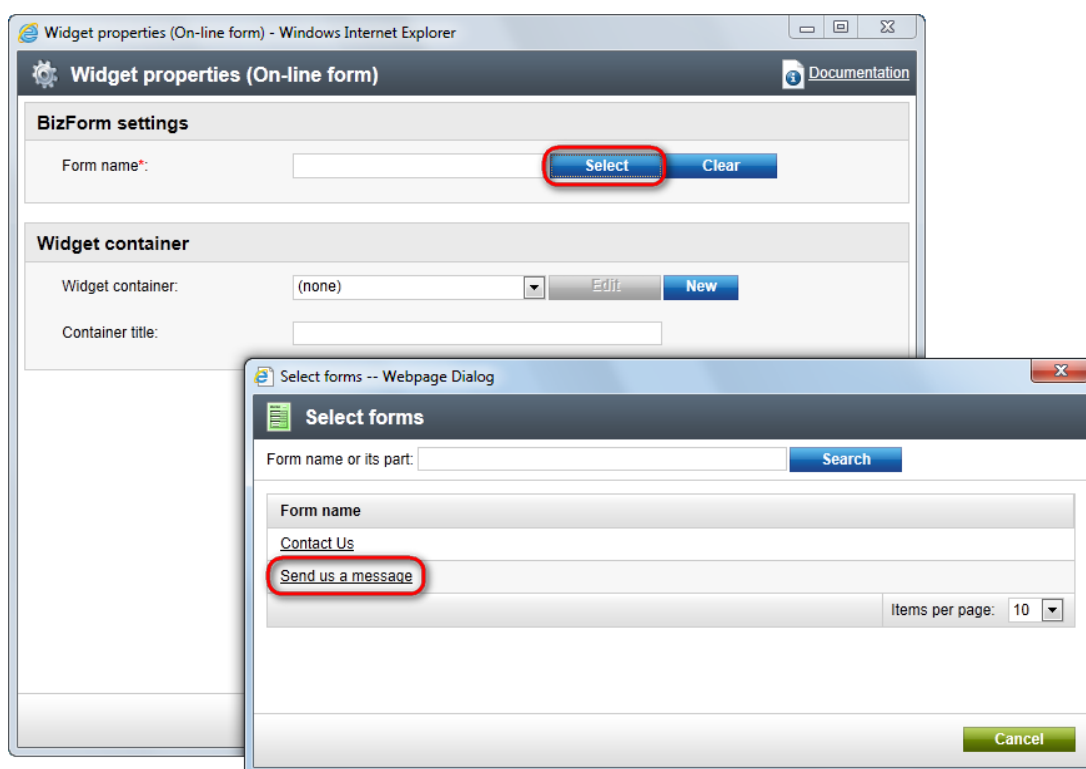
5. Click **New attribute** icon again and enter:
  - **Column name:** LastName
  - **Field caption:** Enter your last name
  - **Field type:** Text box
  - **Maximum length:** 20
6. Click **Save**.
7. Click **New attribute** again to add another column and enter:
  - **Column name:** Email
  - **Field caption:** Enter your e-mail address
  - **Field type:** E-mail
  - **Maximum length:** 40
8. Click **Save**.
9. Click **New attribute** again to add the last column and enter:
  - **Column name:** Text
  - **Field caption:** Enter your message
  - **Field type:** Text area
  - **Maximum length:** 1000
10. Click **Save**.

Your form is now ready to be published on your website:

1. On the main menu, switch to the **Content** tab.
2. Choose the **System integration** page under **Services** in the content tree.
3. In the **Page** editing mode, place the cursor inside the second Editable region.
4. Click the **Insert Form** button in the WYSIWYG editor.

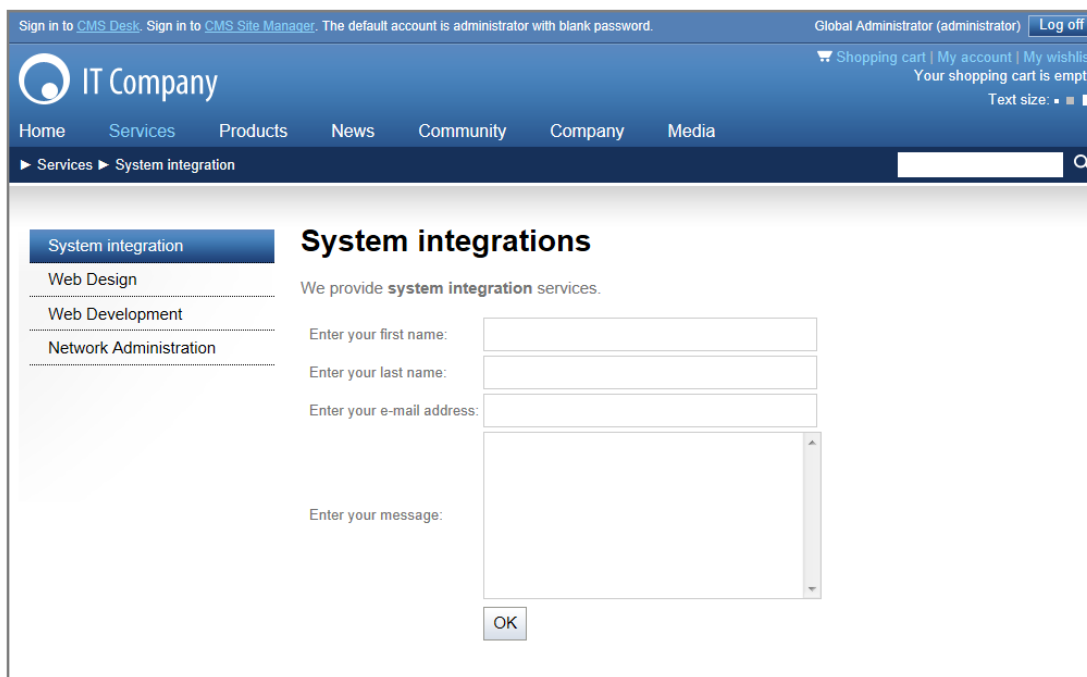


5. In the displayed web dialog, click **Select** next to the **Form name** field.
6. Choose the **Send us a message** form.
7. Click **OK**.



8. Click **Save**

Now switch to the **Preview** mode. You can see that the system has added your form to the **System Integration** page.



After the form is submitted, you can find the form data in **CMS Desk -> Tools -> Forms -> Edit (Your\_Form) -> Data**. You can set an e-mail notification as well at **CMS Desk -> Tools -> Forms -> Edit (Your\_Form) -> Notification e-mail**.

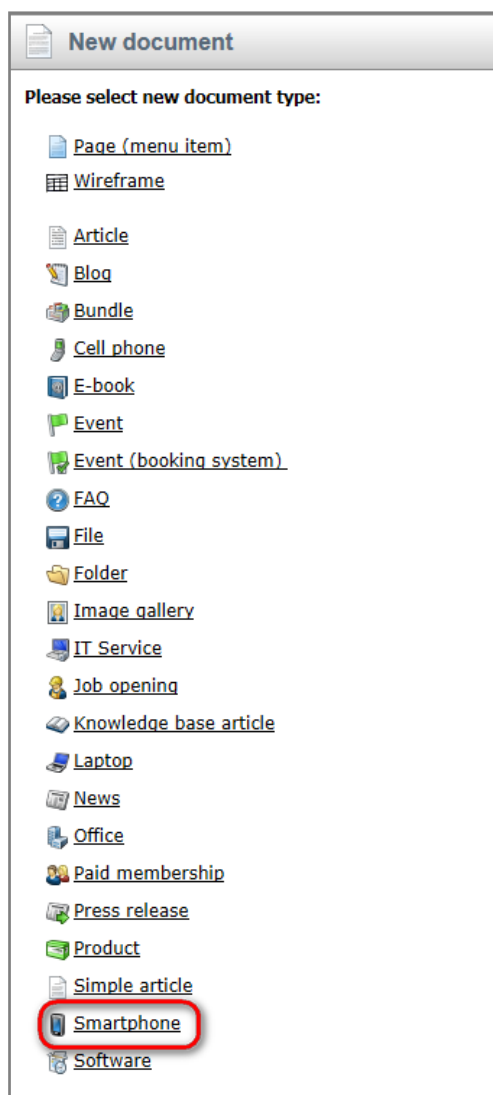
You've just gone through the process of creating a brand new form for your website.

## E-commerce

### Creating a new product

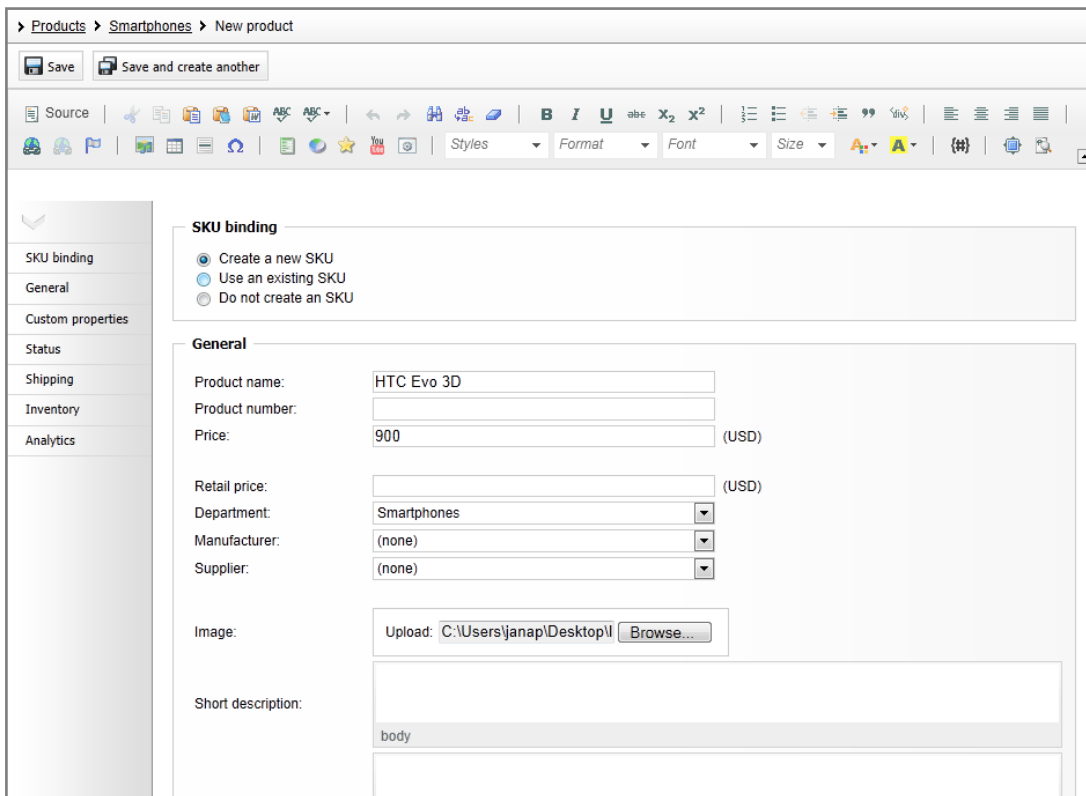
Now you will learn how to create a new product for your e-commerce.

1. In the content tree, choose **Products** -> **Smartphones**.
2. Click **New** in the document action toolbar.
3. Select the **Smartphone** document type.



4. In the **General** section enter the following information:

- **Product name:** HTC Evo 3D
- **Price:** 900
- In the **Department** drop-down menu choose **Smartphones**.
- You may upload the product's image if you wish.



The screenshot shows the 'New product' form in the Kentico CMS interface. The breadcrumb trail is 'Products > Smartphones > New product'. The form has a left sidebar with navigation options: SKU binding, General, Custom properties, Status, Shipping, Inventory, and Analytics. The main content area is divided into two sections: 'SKU binding' and 'General'. In the 'SKU binding' section, there are three radio buttons: 'Create a new SKU' (selected), 'Use an existing SKU', and 'Do not create an SKU'. The 'General' section contains the following fields: 'Product name' (text input with 'HTC Evo 3D'), 'Product number' (text input), 'Price' (text input with '900' and '(USD)' label), 'Retail price' (text input with '(USD)' label), 'Department' (dropdown menu with 'Smartphones' selected), 'Manufacturer' (dropdown menu with '(none)' selected), 'Supplier' (dropdown menu with '(none)' selected), 'Image' (upload field with 'Upload: C:\Users\janap\Desktop\I' and a 'Browse...' button), and 'Short description' (text area with 'body' as a placeholder).

5. In the **Custom properties** section enter the following information:

- **Operating system:** Android 2.3 Gingerbread
- **Dimensions:** 127 x 66 x 11.3 mm
- **Weight:** 170 g
- **Display type:** Super-LCD
- **Display size:** 4.3"
- **Display resolution:** 960x540
- **CPU:** Qualcomm Snapdragon Dual-Core 1.2 GHz
- **RAM:** 1 GB
- **Internal storage:** 4 GB
- **Removable storage:** 8 GB Micro-SDHC (expandable up to 32 GB)
- **Battery type:** Li-ion 1730 mAh
- **Camera:** Dual 5 MP
- **GPS:** YES

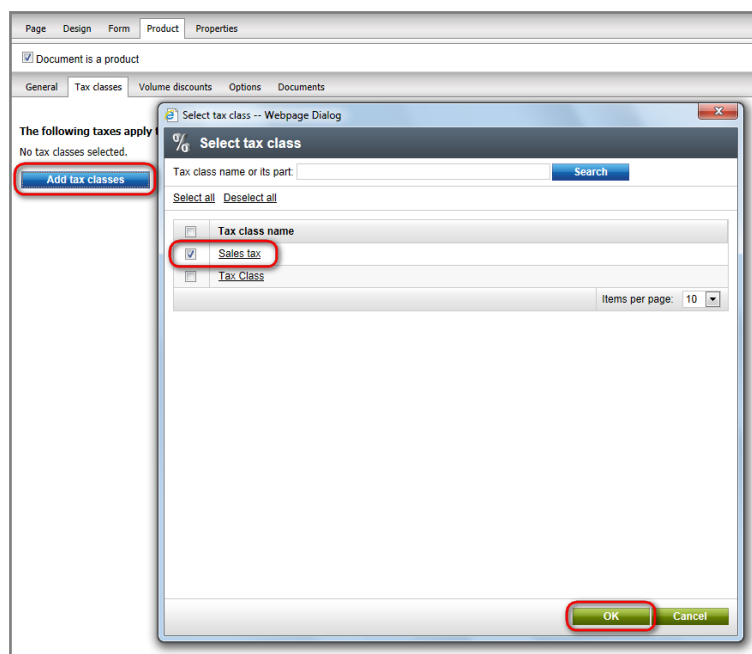
6. Click **Save** at the top.



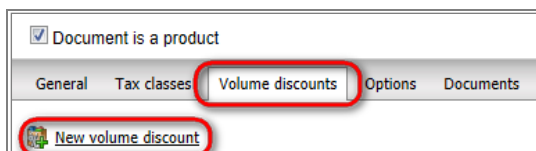
- The system displays a **Form** tab of the newly created product.

You have just created a new product, which is now ready for adding a tax class and setting a volume discount:

1. Go to **SKU** -> **Tax classes**.
2. Click **Add tax classes** button.
3. Choose the **Sales tax**.
4. Click **OK** to save the changes.

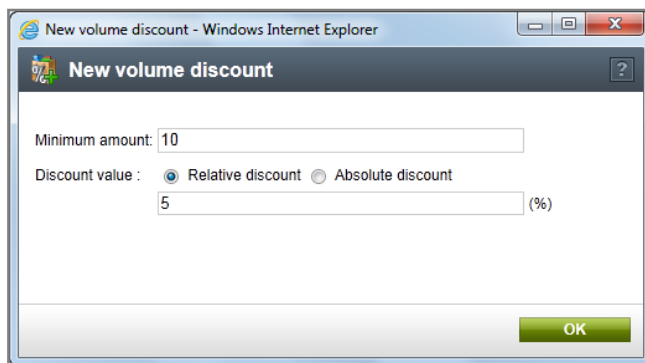


5. Switch to the **Volume discounts** tab.
  6. Click **New volume discount**.
- The system displays a **New volume discount** dialog.



7. Enter **10** in the **Minimum amount** textbox.
8. Choose the **Relative discount** radio button.

9. Enter 5 in the **Discount value** textbox (this will add the 5% discount to the product price.).
10. Click **OK** to close the dialog.



11. Choose the **Smartphones** page in the content tree.
  - You can see that your new product has been successfully added to your e-commerce website.

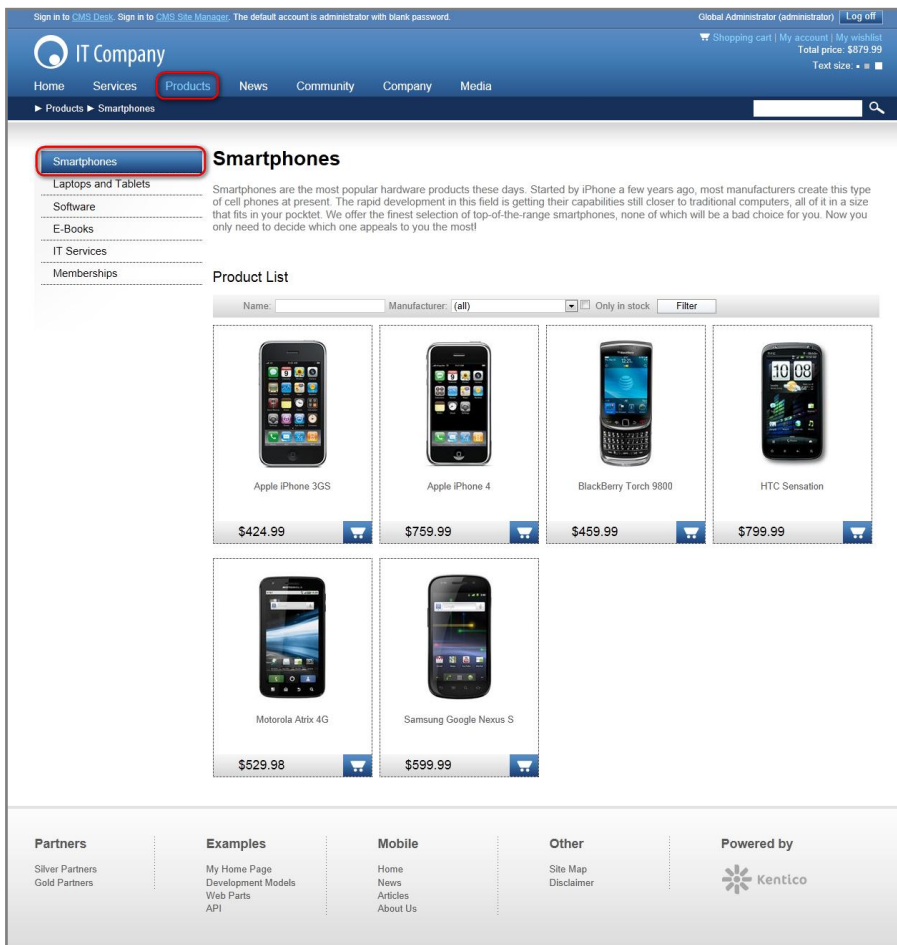
You've learned how to create a new product and how to set a tax class and volume discount for it.

## Changing order status

In this section you will learn how to change the status of your order.

Firstly you have to make an order to be able to change its status.

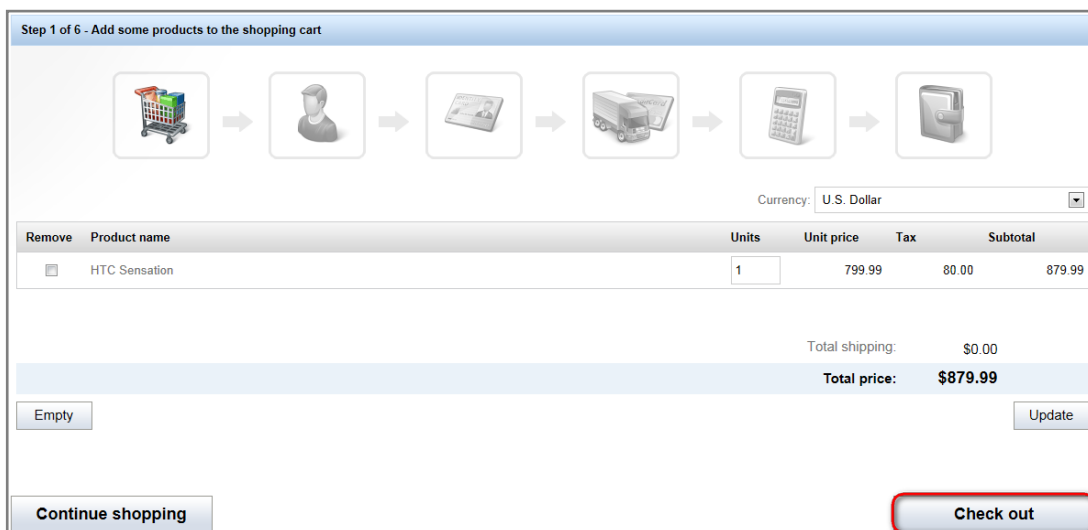
1. Open the **Corporate site** in your browser (without signing in).
2. Choose **Products** -> **Smartphones** in the main menu.



3. Click the Add to shopping cart button below **HTC Sensation**



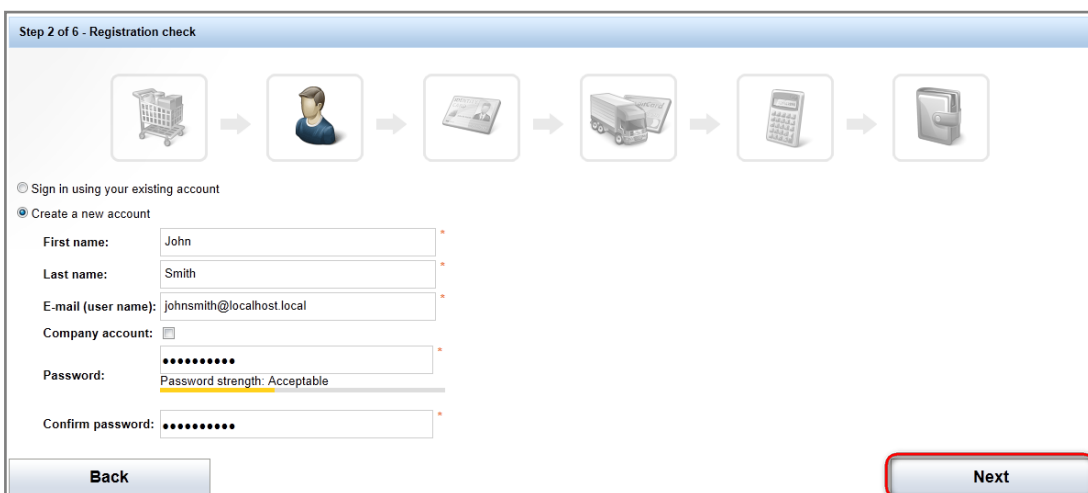
4. In **Step 1** of the check out process, click the **Check out** button at the bottom.



5. In **Step 2**, choose **Create a new account** and enter the following information:

- **First name:** John
- **Last name:** Smith
- **E-mail (user name):** johnsmith@localhost.local
- **Password/Confirm password:** johnsmith1

6. Click **Next**.



7. In **Step 3**, enter the following information:

- **Name (company or personal):** Software Development
- **Address lines:** 1020 Blueberry Ln.
- **City:** Tucson
- **ZIP:** 85474

8. Click **Next**.

Step 3 of 6 - Select billing and shipping address

Billing address: (new) ▼

Name (company or personal): Software Development \*

Address lines: 1020 Blueberry Ln. \*

City: Tucson \*

ZIP: 85474 \*

Country: USA ▼

Alaska ▼

Phone number:

My shipping address is different from the billing address.

**Back** **Next**

9. In **Step 4**, do not change anything and click **Next**.

Step 4 of 6 - Select payment and shipping methods

Shipping: DHL (\$8.00) ▼

Payment: Cash on delivery ▼

**Back** **Next**

10. In **Step 5**, click **Order now**.

**Step 5 of 6 - Order preview**

**Billing address**  
Software Development  
1020 Blueberry Ln.  
Tucson  
85474  
USA, Alaska

**Shipping address**  
Software Development  
1020 Blueberry Ln.  
Tucson  
85474  
USA, Alaska

**Payment method:** Cash on delivery      **Shipping option:** DHL

Product name	Units	Unit price	Tax	Subtotal
HTC Sensation	1	799.99	80.00	879.99

Shipping: \$8.00  
**Total price: \$887.99**

Product tax name	Tax summary
Sales tax	80.00

**Order note:**

**Back**
**Order now**

You should see the order confirmation text. The system has received your order and you can now change the order status.

1. Sign in to the **CMS Desk**.
2. Go to **E-commerce** -> **Orders**.

**Orders**

**New order**

Order ID:

Customer last name:

Customer first name:

Order status: (all)

Order is paid: (all)




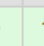
Site: Corporate Site

**Show**

Actions	ID	Customer name	Company	Customer e-mail	Order date	Total price	Status	Is paid
	1	John Smith		johnsmith@localhost.local	8/22/2011 9:32:53 AM	\$887.99	New	No

Items per page: 25

3. Click **Edit** next to the newly created order.


Actions	ID	Customer name
   	1	John Smith

4. Choose **Payment received** from the **Status** the drop down menu on the **General** tab.
5. Click **OK**.

> Orders > 1

General
Shipping
Billing
Items
Invoice
History

Order ID: 1

Date:   Now

Invoice number: 1

Status: Payment received ▼

Customer: John Smith Edit

Company address: (none) ▼ Edit New

Order note:

OK

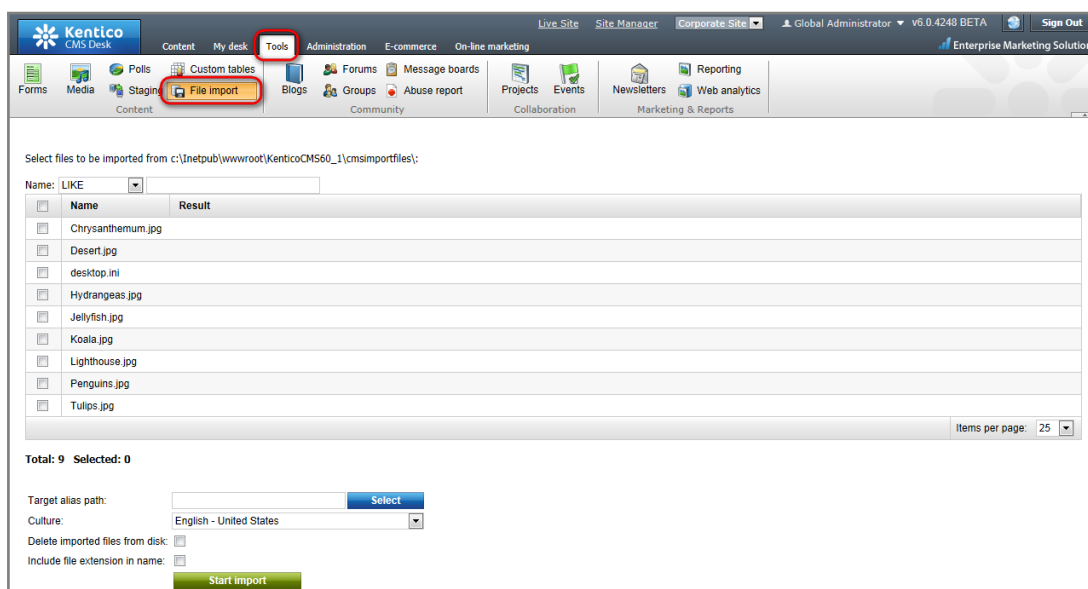
The system has successfully registered the status of your order.

## File import

### Bulk import of files

In this section you will learn how to import files and documents to your website.

1. Go to **Tools** -> **File import**.
  - You should now see the files from the folder designated as the source for the file import. If you can't see any, it means, there are no files in your file import folder.



2. Check the path to the file import folder at the top and place the files you want to upload to that folder.

Select files to be imported from c:\inetpub\wwwroot\KenticoCMS60\_1\cmsimportfiles\:

3. Check the **Select** checkbox next to the file you want to import.
4. Click **Select**.



Select files to be imported from c:\inetpub\wwwroot\KenticoCMS60\_1\cmsimportfiles\:

Name: LIKE

<input type="checkbox"/>	Name	Result
<input type="checkbox"/>	Chrysanthemum.jpg	
<input type="checkbox"/>	Desert.jpg	
<input type="checkbox"/>	desktop.ini	
<input checked="" type="checkbox"/>	Hydrangeas.jpg	
<input type="checkbox"/>	Jellyfish.jpg	
<input type="checkbox"/>	Koala.jpg	
<input type="checkbox"/>	Lighthouse.jpg	
<input type="checkbox"/>	Penguins.jpg	
<input type="checkbox"/>	Tulips.jpg	

Total: 9 Selected: 1

Target alias path:  **Select**

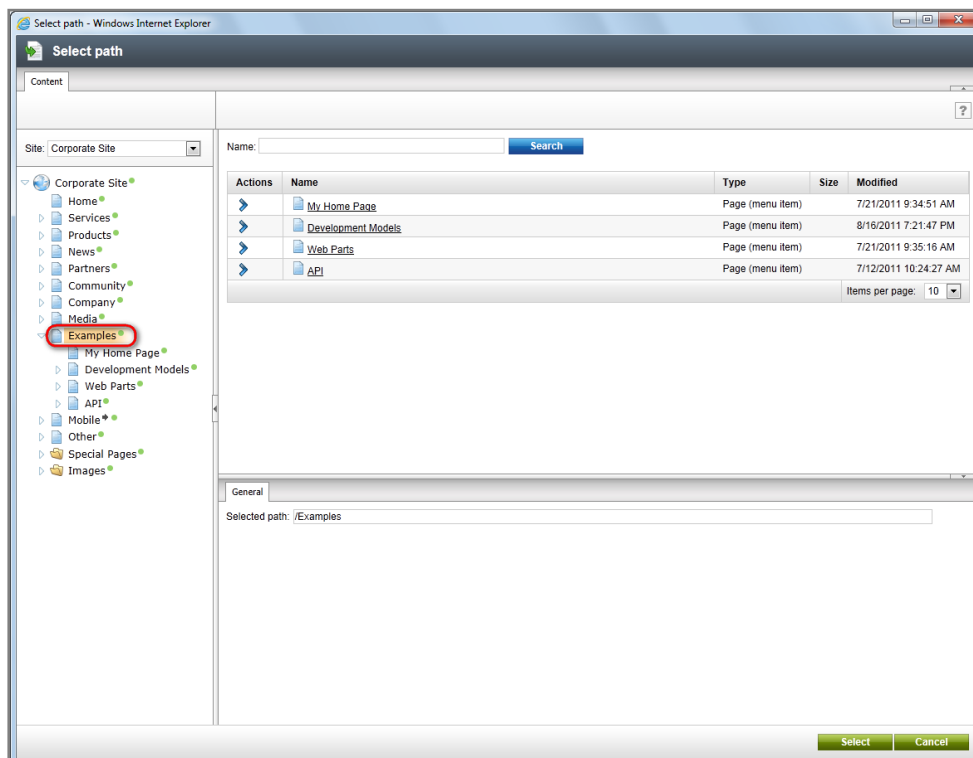
Culture: English - United States

Delete imported files from disk:

Include file extension in name:

**Start import**

5. Choose **Examples** in the content tree.
6. Click the **Select** button.



Select path - Windows Internet Explorer

Content

Site: Corporate Site

Name:  Search

Actions	Name	Type	Size	Modified
>	My Home Page	Page (menu item)		7/21/2011 9:34:51 AM
>	Development Models	Page (menu item)		8/16/2011 7:21:47 PM
>	Web Parts	Page (menu item)		7/21/2011 9:35:16 AM
>	API	Page (menu item)		7/12/2011 10:24:27 AM

Items per page: 10

General

Selected path: /Examples

**Select** **Cancel**

7. Click **Start import**.

Select files to be imported from c:\inetpub\wwwroot\KenticoCMS60\_1\cmsimportfiles\:

Name: LIKE

<input type="checkbox"/>	Name	Result
<input type="checkbox"/>	Chrysanthemum.jpg	
<input type="checkbox"/>	Desert.jpg	
<input type="checkbox"/>	desktop.ini	
<input checked="" type="checkbox"/>	Hydrangeas.jpg	
<input type="checkbox"/>	Jellyfish.jpg	
<input type="checkbox"/>	Koala.jpg	
<input type="checkbox"/>	Lighthouse.jpg	
<input type="checkbox"/>	Penguins.jpg	
<input type="checkbox"/>	Tulips.jpg	

**Total: 9 Selected: 1**

Target alias path:

Culture:

Delete imported files from disk:

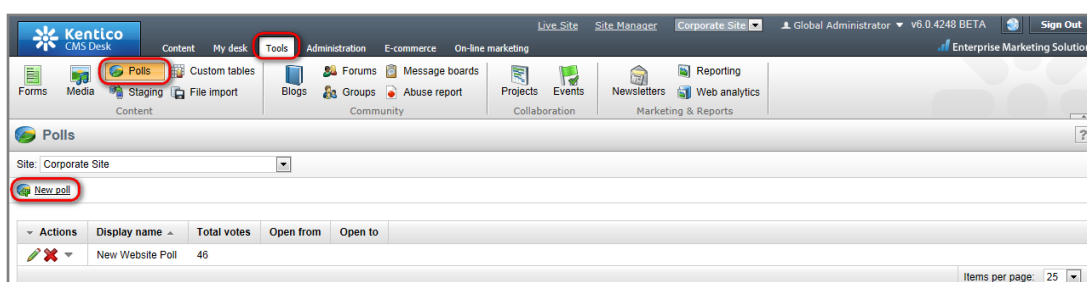
Include file extension in name:

You've just successfully imported the selected file to your website.

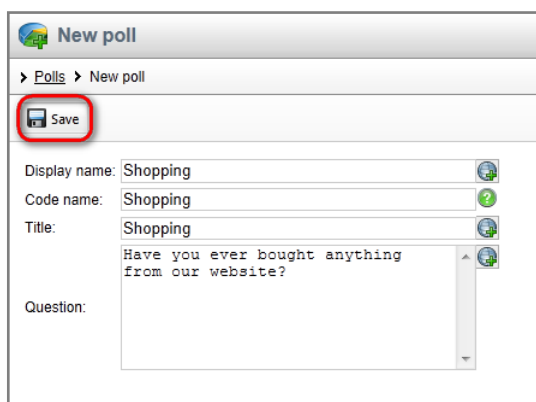
## Polls

### Creating and publishing a new poll

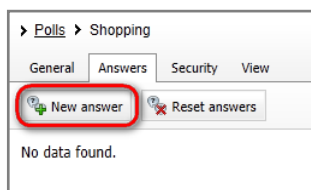
1. Go to **Tools** -> **Polls**.
2. Click **New poll**.



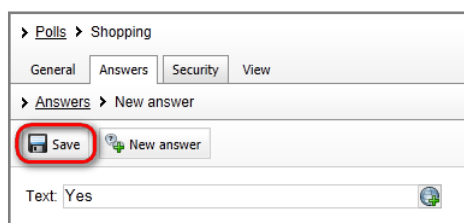
3. Enter the following information:
  - **Display name:** Shopping
  - **Code name:** Shopping
  - **Title:** Shopping
  - **Question:** Have you ever bought anything from our website?



4. Click **Save**.
5. Switch to the **Answers** tab.
6. Click **New answer**.



7. Enter *Yes* as **Text**.
8. Click **Save**.



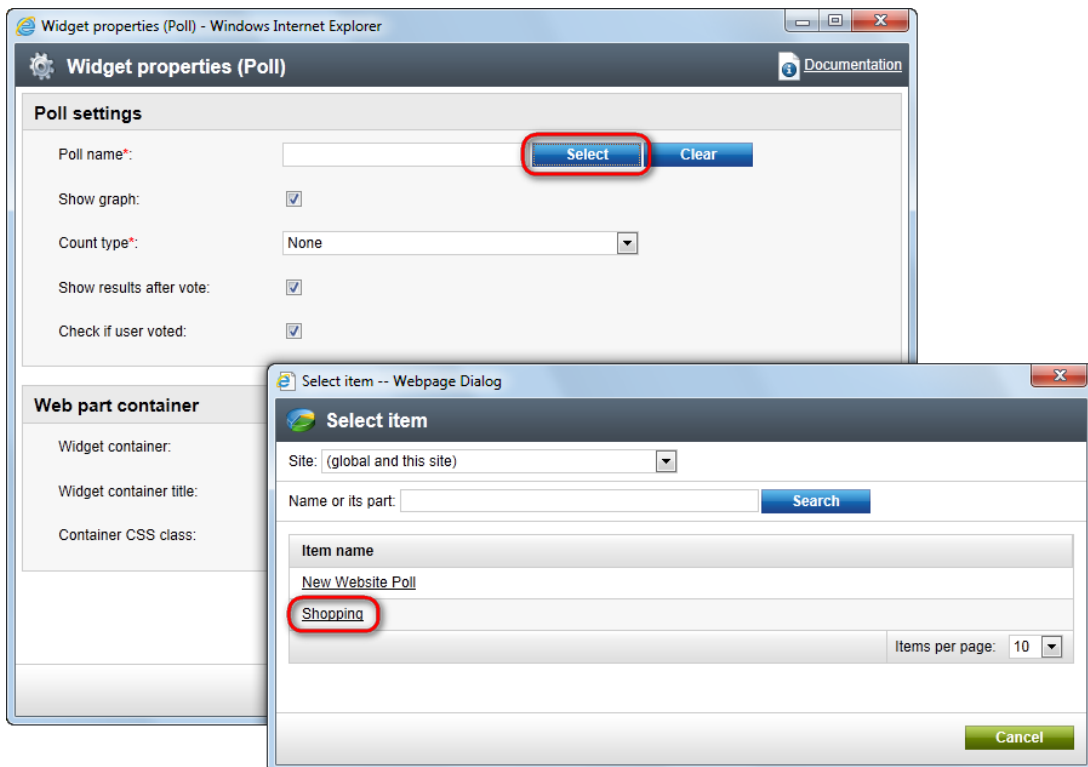
9. Click **New Answer** again.
10. Enter *No* into the **Text** textbox.
11. Click **Save**.
12. Switch to the **View** tab to make sure that your poll looks the way you want it to.

You have created a poll and it is now ready to be published on your website:

1. Switch to the **Content** tab in the main menu.
2. Choose the **System Integration** page under **Services** in the content tree.
3. Place the cursor into the **Second Editable region**.
4. Click the **Insert poll** button on the WYSIWYG editor panel.

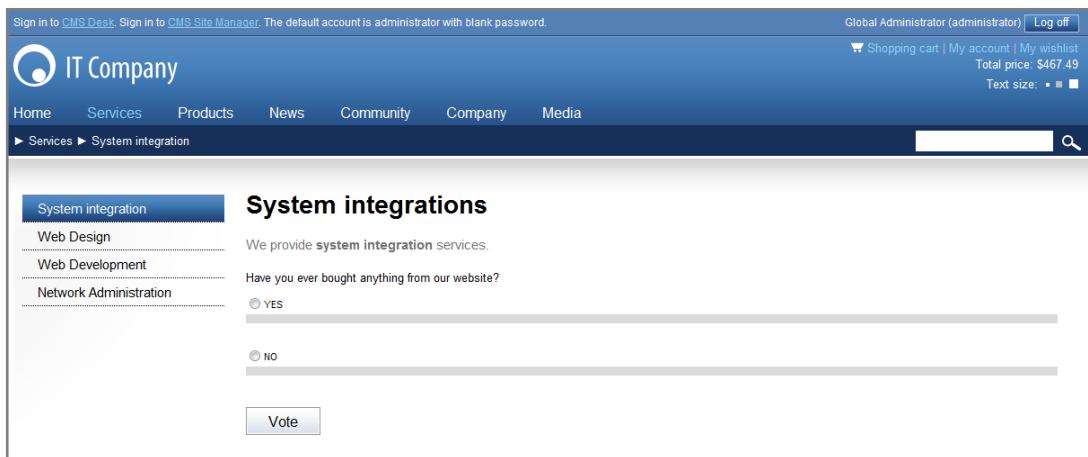


- The system displays a **Widget properties (Poll)** dialog.
5. Click **Select** next to the **Poll name** field.
  6. Choose the **Shopping** poll.
  7. Click **OK**.



8. Click **Save**.

Now switch to the **Preview** mode to make sure that your poll is displayed correctly.



That's how you create a poll and publish it on your website.

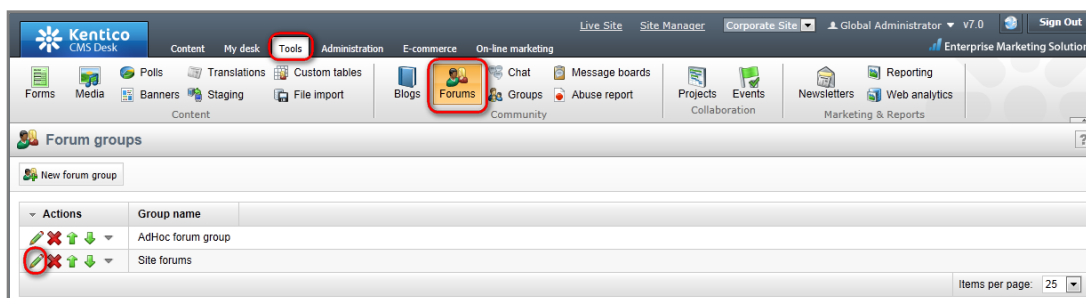
## Forums

### Creating a new forum

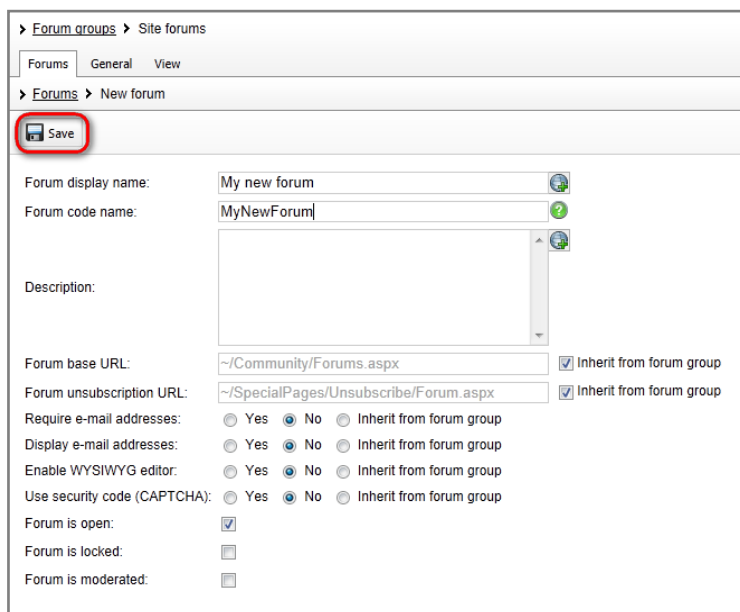
**Note:**

In this part of the guide, we assume that the forum group is already created for your website and it's published. We also assume that the users have the right to create forums.

1. Go to **Tools -> Forums**.
2. Click **Edit** next to the existing forum group.



3. Click the **Add forum** button.
4. Enter the following information:
  - **Forum display name:** My new forum
  - **Forum code name:** MyNewForum
5. Click **Save**.

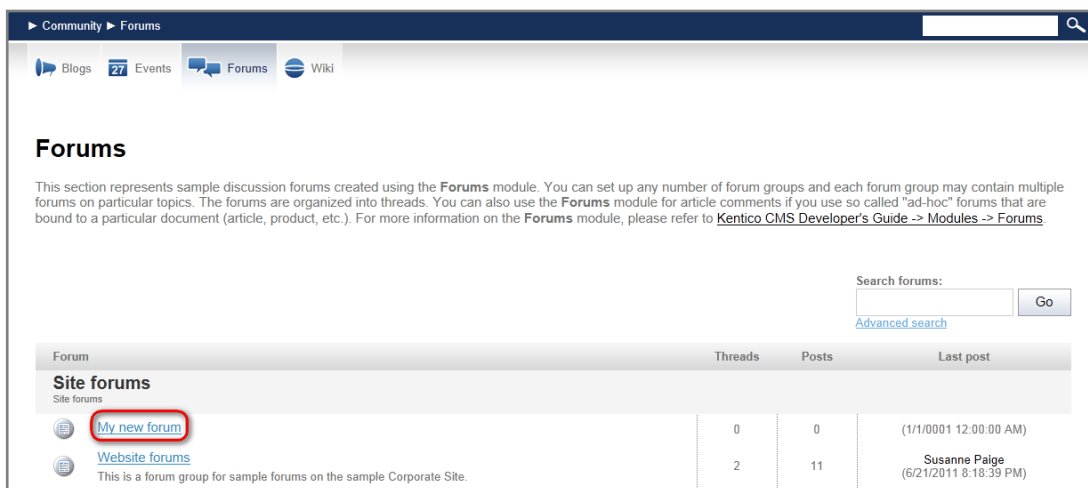


You have just created your new forum. Now you'll learn how to post a new thread.

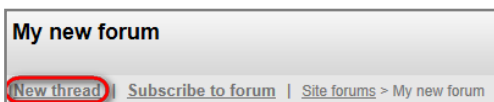
1. Click **Sign out** at the top-right corner of the page.
  - You are redirected to the **Home** page of the **Corporate site**.
2. Click **Community** -> **Forums** at the main menu.



3. Click **My new forum** in the **Site forums** section.



4. Click the **New thread** button.



5. Enter the following information:

- **User name:** Administrator
- **E-mail:** admin@gmail.com
- **Subject:** Welcome
- **Post:** Welcome to our new forum.

6. Click **OK**.



### My new forum

---


#### New thread

User name:

E-mail:

Subject:

Post: 




Welcome to our new forum.

Subscribe to post:

You've just created a new forum and posted the very first thread.

Sign in to [CMS Desk](#). Sign in to [CMS Site Manager](#). The default account is administrator with blank password.



[Shopping cart!](#) [My account!](#) [My wishlist](#)  
 Your shopping cart is empty  
 Text size: ■ ■ ■

Home Products News Community Services Company Media
Community Forums

Blogs
27 Events
Forums
Wiki


## Forums

This section represents sample discussion forums created using the **Forums** module. You can set up any number of forum groups and each forum group may contain multiple forums on particular topics. The forums are organized into threads. You can also use the **Forums** module for article comments if you use so called "ad-hoc" forums that are bound to a particular document (article, product, etc.). For more information on the **Forums** module, please refer to [Kentico CMS Developer's Guide -> Modules -> Forums](#)

Search forums:    
[Advanced search](#)

### My new forum

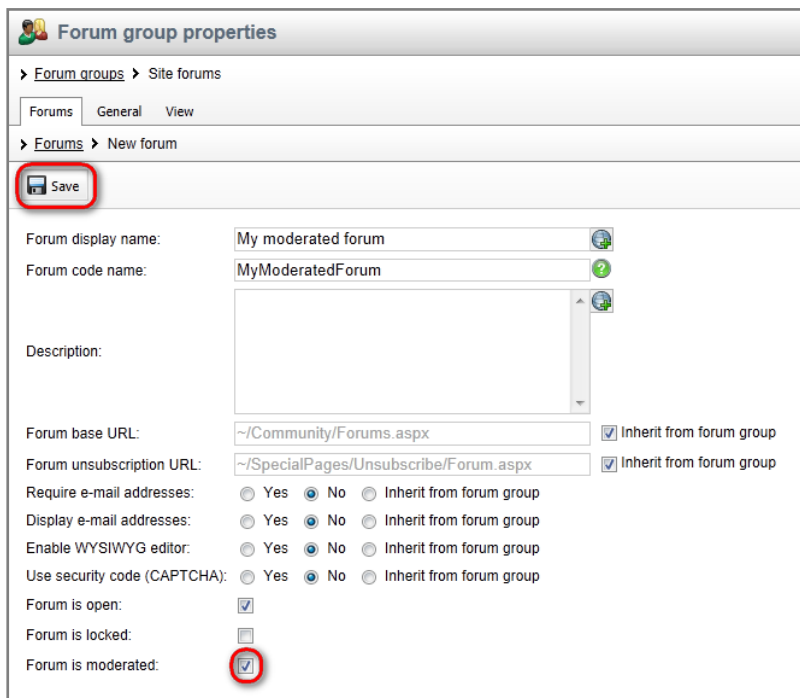
[New thread](#) | [Subscribe to forum](#) | [Site forums > My new forum](#)

Thread	Created by	Posts	Views	Last post
 <a href="#">Welcome</a>	Administrator	1	0	Administrator (8/9/2012 2:07:08 PM)
1				

## Moderating forum posts

Now you will learn how to create a moderated forum so that every post has to be approved before being published.

1. Go to **Tools -> Forums**.
2. Click **Edit** next to the existing forum group.
3. Click the **Add forum** button.
4. Enter the following information:
  - **Forum display name:** My moderated forum
  - **Forum code name:** MyModeratedForum
5. Check the **Forum is moderated** checkbox.
6. Click **Save**.



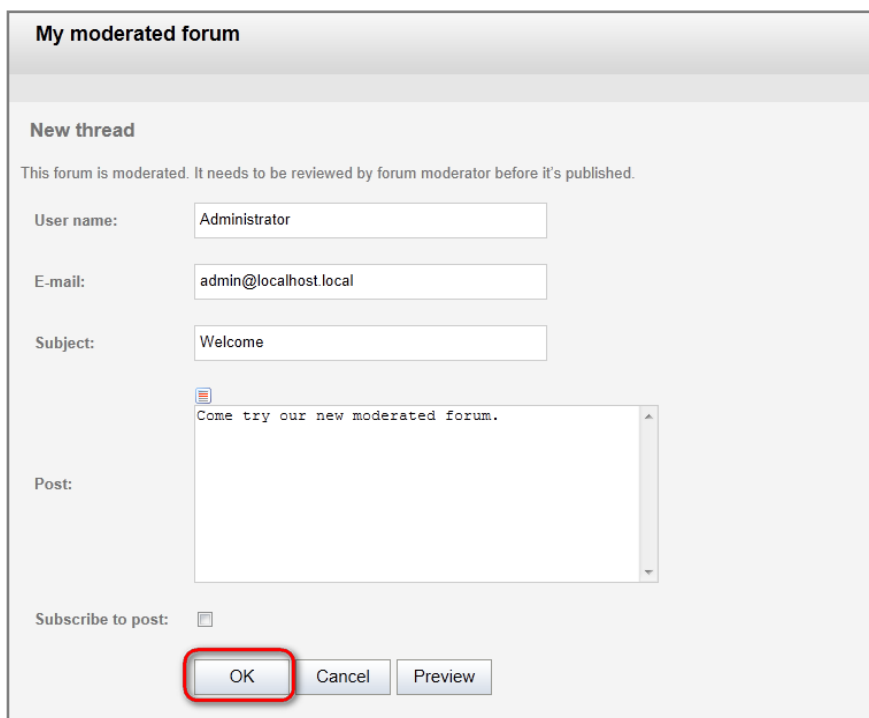
The screenshot shows the 'Forum group properties' dialog box. The 'Save' button is circled in red. The 'Forum is moderated' checkbox is also circled in red. The dialog box contains the following fields and options:

- Forum display name: My moderated forum
- Forum code name: MyModeratedForum
- Description: (empty text area)
- Forum base URL: ~/Community/Forums.aspx
- Forum unsubscription URL: ~/SpecialPages/Unsubscribe/Forum.aspx
- Require e-mail addresses:  Yes  No  Inherit from forum group
- Display e-mail addresses:  Yes  No  Inherit from forum group
- Enable WYSIWYG editor:  Yes  No  Inherit from forum group
- Use security code (CAPTCHA):  Yes  No  Inherit from forum group
- Forum is open:
- Forum is locked:
- Forum is moderated:

You have just created a moderated forum. As a global administrator, it's not necessary to approve your own posts as they are being approved automatically. Therefore, to try out the approve functionality, please follow these instructions:

1. **Sign out** from CMS Desk.

2. Go to the **Community -> Forums -> My moderated forum -> New thread**.
3. Enter your user name and your e-mail address to the **User name** and the **E-mail** fields.
4. Type *Welcome* as the **Subject** and to the **Post** textbox enter *Come try our new moderated forum*.
5. Click **OK**.



**My moderated forum**

**New thread**

This forum is moderated. It needs to be reviewed by forum moderator before it's published.

User name:

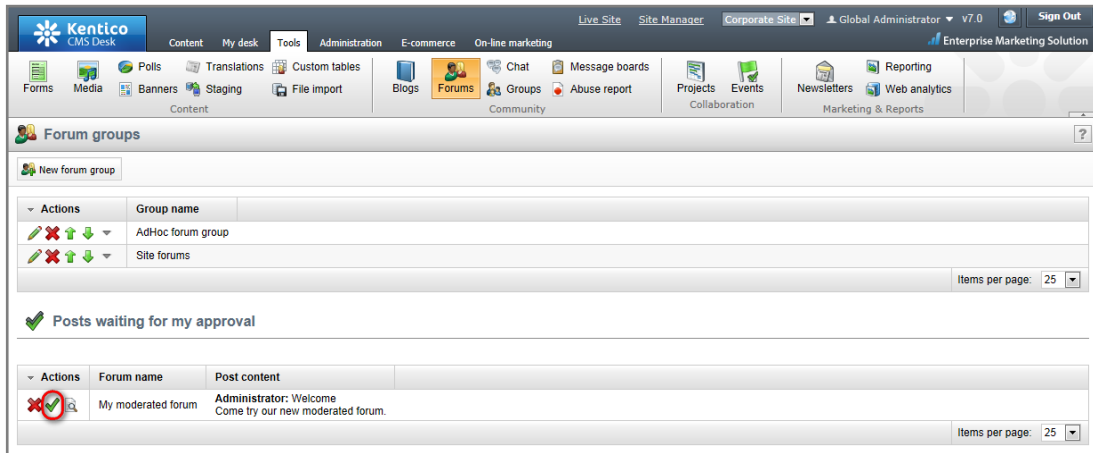
E-mail:

Subject:

Post:

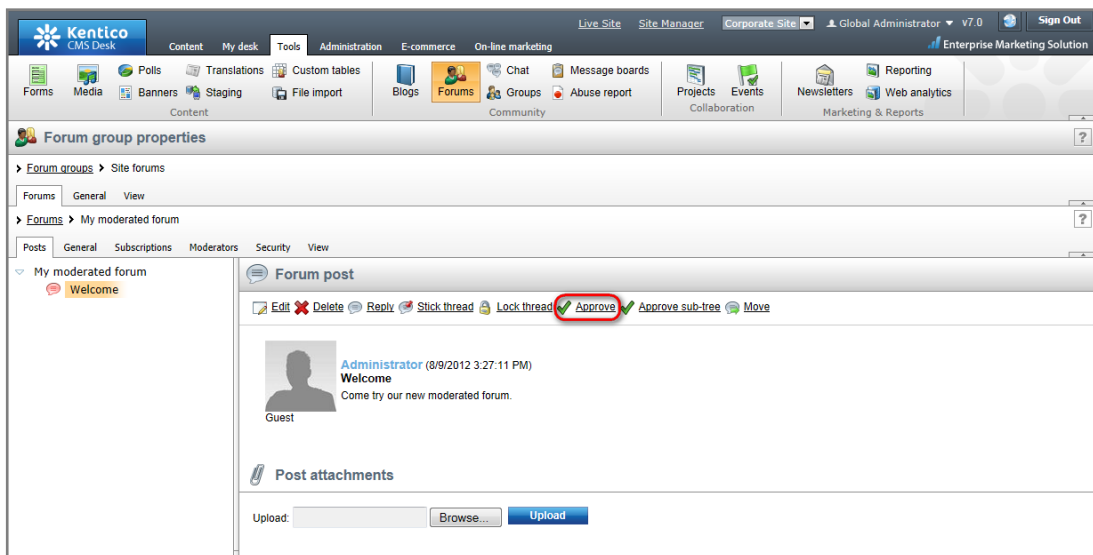
Subscribe to post:

- You have posted a thread. However, to be visible in the forum, it has to be approved by the designated moderator.
6. Sign in back to the CMS Desk.
  7. Navigate to **Tools -> Forums**.
  8. Click the **Approve** button under the **Posts waiting for my approval** section.



Alternatively, you can find a particular forum post in the forum structure and approve it:

1. Click **Edit** button next to the existing forum group.
2. Click **Edit** button next to **My moderated forum**.
3. Navigate to the **Welcome** post in the left panel.
4. Click **Approve**.



You have just approved your new thread and it's now visible on your website.